



*AUDIO/VIDEO* **PLAYER**

**AUDIO**

**VIDEO**

**OEM**

**MISC**

# VIDEO PLAYBACK

## Flash mpx HD

The Flash mpx HD broadcasts audio and video files stored on a USB flash memory or internal hard disk. It is a solid state device that will give you years of trouble free operation with full HD video quality up to 1080p.

Built in up to 7 inputs are available for connection to push buttons and sensors. Inputs are programmable to play selected audio/video files. With the fast mode, the player is configured to provide a very fast reaction time so that the video/audio playback is instantaneous.



- Reads file format :
  - Video : MPEG-2 TS/TP / MPEG-4 / MOV H.264 / DivX / XviD / VOB /
  - Still pictures : JPeg - Audio : MP3 / AC3
- Input / Output
  - HDMI, YPbPr, Composite + audio :
  - 3 up to 7 trigger input
  - Ethernet RJ45
  - RS485
- Power Supply: 12V

## Flash mpx SD



The Flash mpx SD broadcasts audio and video files stored on a SD card, Compact Flash card or USB flash memory. It is a solid state device that will give you years of trouble free operation.

Flash MPX SD read standard DVD (.vob) and Mpeg2 files, still images (jpeg) and wav / MP3 audio files.

Built in 3 inputs (up to 7 with combined mode) are available for direct connection to push buttons and sensors.

You will use the integrated 2x14W audio stereo amplifier for most of your applications.

The Flash MPX SD displays video on a TV screen or any video screen with a composite video or VGA input.

The RS485 link provide a full interactive interface to control the player from a computer or other all other automation and drives.

- Reads file format :
  - DVD/.vob, MPeg 2 / MP3-Wav 16 bits - 44.1-48kHz
- Video output :
  - VGA : 640 x 480 / Composite : 720 x 480/576
- Storage : Compact Flash, SD card, USB stick
- Connectics :
  - Vidéo : VGA and composite RCA
  - Audio : RCA 2V p/p
  - Speaker out : 14W 8 Ohms stereo
  - Input contacts : 3 (up to 7 with binary combined mode)
  - Link : RS485 - RJ11
- Power supply : DC 12V



# BACKGROUND MUSIC

## MY MUSIC PLAYER

**NEW**



- Reads MP3 and WAV files (16/24bits up to 96kHz)
- Time and date scheduler
- Storage on SD/SDHC card\*, USB stick\*, SATA HDD\*
- Infrared sensor for remote control handset
- Symetrical & assymetrical line output
- Ethernet link (Web server and FTP)
- Streaming (play web radio)
- Auxiliary input with configurable fade in/fade out
- RS232 and USB 2.0 link
- 12V external power supply unit
- Format 1/3 of a 19" rack 1U

\* Media not provided

Powerful and dedicated to automated background music broadcast, My Music Player reads MP3 and Wav files stored on a SD card, a USB stick or an internal hard disk.

My Music Player is programmable: broadcast schedules are created using the user friendly calendar software provided and transferred to the player by Ethernet or by straight forward copy onto the storage media.

My Music Player can also be used for web radio streaming ; it is then possible to program the player to switch from the web radio to local broadcast of files stored on its own media.

The auxiliary input offer the possibility to switch from a main source and deliver programmed message.



## MY MUSIC STATION

**NEW** (Q4/2013)

This player is the ideal solution to broadcast background music in small to medium sized public and commercial premises.

The My Music Station plays back MP3 and Wav audio files stored on its internal hard disc, SD/SDHC card, USB flash memory ; it includes an amplifier and offers time programming functions.

Audio content is updated by direct access to the media by USB, Ethernet or by CD update sent by a music provider.



- Reads MP3/Wav files (16/24bits up to 96kHz)
- Time and date scheduler
- Internal SATA HDD\* or SD card\* or USB flash memory\* + DVD ROM drive
- Infrared sensor for remote control handset
- 2x15 w integrated amplifier
- Ethernet, RS232 and USB 2.0 link
- Video out (display template + song title)

\* Media not provided



# MICRO INSTALLATION MODULES

## MICRO **PLAYER** MKII



**NEW**

The MicroPlayer mkII is a versatile player, designed for installations where broadcast of sounds, music, sound effects is required either in a pre-defined playback or interactive mode. Autoplay, powerful automation of playback pattern, low power mode, RS232 serial link and input contacts are the main features of this amplified player widely used for interactive audio applications, including outdoor.

- Reads MP3/Wav files stored on SD/SDHC card or USB drive
- 4 inputs (up to 15) dry contact.
- 2 output on Mosfet 500mA
- 2x18 w integrated amplifier
- Power supply 12V
- Dimensions 1/3 19" rack



## MICRO **AMP2**



The Micro AMP 2 is a double amplifier. The first is a Bridge-Tied Load (BTL) class-B amplifier. The output power is 2x25W in a 4 Ohms load or 2x40W in a 2 Ohms load. The second is an headphone amplifier capable of delivering 250mW of continuous average power to an 8 Ohms load with 0.1% THD+N

Amplifier 1 :

- 2x40W / 2 Ohms (THD 10%)
- Thermally protected
- 2 to 8 Ohms load

Amplifier 2 - headphone out :

- 2x375mW / 8 Ohms (THD 10%)
- Thermally protected
- 8 Ohms to 32 Ohms load

## MICRO **AMP4**



The Micro AMP 4 is a quad stereo headphone amplifier capable of delivering 250mW of continuous average power to an 8 Ohms load with 0.1% THD+N

- 4 individual headphone amplifier
- Volume for each channel
- 375mW / 8 Ohms (THD 10%)
- Thermally protected
- 8 Ohms to 32 Ohms load



## MICRO **SWITCH**



The MicroSwitch is a power switch activated by input contact. Connect the MicroSwitch dry contact to a push button or a relay to trigger the internal relay and power any type of electrical load in 110/220V.

- Power switching from 100 to 250V - 5A
- 9 switching modes - can be configured
- Integrated timer: 0 to 12 seconds or 0 to 12 minutes - Choice of repeated trigger or
- Power supply 12V
- Dimensions 1/3-19" rack



# SHOW CONTROL

## EVENT PLAYER



The Event Player is programmable: it runs automatically an unlimited number of programmed shows.

The Event Player is interactive: programs can be triggered by contact closures, connected to sensors, push buttons...

The Event Player is a show controller: it controls programmed actions of the show in perfect synchronisation with the audio file.

The Event Player is a high quality audio player as well as a powerful and versatile Show Controller designed for non-stop operation.

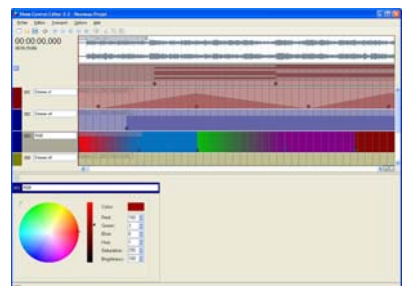
The Event Player reads audio and sequence DMX files stored on a SD card or a USB stick. It executes DMX sequences, commands output contacts, and provides a RS232 link to control other pieces of equipment.

Whichever control is required, for full automation or remote control, the Event Player offers powerful time programming, Ethernet, RS232 serial link and interactivity on input dry contacts.



- Reads MP3 and WAV files (16/32 bits - 44.1/96kHz)
- Storage on SD/SDHC card, USB stick, USB hard disk
- Autoplay mode, can be configured and disabled
- Show control function
- Time and date scheduler
- 8 inputs on dry contacts. Can be combined up to 255 triggers
- 8 outputs on optocoupler (open collector)
- 512 DMX channels output
- RS232 serial link
- Ethernet link (Web server and FTP)
- USB link to update SD card
- Infrared sensor for remote control handset
- 2x20 w integrated amplifier
- Digital setting of volume, treble, medium, bass
- Auxiliary input with configurable fade in/fade out
- Digital audio output S-PDIF
- 12V external power supply unit
- Format 2/3 of a 19" rack 1U

Event	Start	End	Channel	Value	Priority	Group
Event 1	10:00:00	10:00:05	1	100	1	Group 1
Event 2	10:00:05	10:00:10	2	200	1	Group 1
Event 3	10:00:10	10:00:15	3	300	1	Group 1
Event 4	10:00:15	10:00:20	4	400	1	Group 1
Event 5	10:00:20	10:00:25	5	500	1	Group 1
Event 6	10:00:25	10:00:30	6	600	1	Group 1
Event 7	10:00:30	10:00:35	7	700	1	Group 1
Event 8	10:00:35	10:00:40	8	800	1	Group 1



# INTEGRATION PRODUCTS

## NANO PLAYER



The NanoPlayer is a versatile OEM audio board, designed for integration to add audio to various devices. The NanoPlayer reads WAV and MP3 audio files stored on a SD card. Broadcast automatically starts on powering on. By connecting the input contact to a sensor or push button, or by sending an infra red command, interactive broadcast of one or several associated files is achieved.

- Reads Wav and MP3 files on SD card
- One input on dry contact
- 2x7w integrated amplifier
- Infrared sensor
- Power supply 12V



Various brackets and mountings are available to install 4 or 15 NanoPlayers, horizontally or vertically in a 19" rack configuration.



## NANO PLAYER Headphone



The NanoPlayer headphone is similar to NanoPlayer with 2 headphone amplifier and 6 outputs. An analog input with modulation detector switch the audio output to the aux input. 2 firmware available with alternative uses. Perfect for audio kiosk, headphone demonstration ...

## NANO AMP1



A very small mono 7W digital class D amplifier up to 88% efficiency at a 12V supply.

- 7W/80hms - 13W/40hms (THD 10%)
- 8V to 28V Supply Voltage Range
- Thermal and Output Current Protection
- Size : 30mm x 40mm

## OEM board



Our expertise in design and manufacture of audio and video sources allows us to undertake special and OEM projects. ... submit your technical specification and we will be happy to discuss product development with you.

## GEO PLAYER

Addition of a GPS extension module provides automated broadcast of audio information related to geographical positions.



## OLFA PLAYER

A complete solution for Point Of Sale (POS) including audio player based on USB flash memory, 1.4W amplifier, PWM out for LED, a Fan to diffuse a fragrance and a trigger input compatible with infrared sensor.



# ACCESSORIES

## SENSO PAD



The SensoPad is a proximity sensor operating through any insulating material. Stuck onto a chosen surface, the SensoPad detects approach of finger and triggers the associated action. The SensoPad replace a push button.

The SensoPad works on wood, glass, plaster... It is an invisible trigger when integrated in pieces of furniture or decorating items.



## VIBRO PAD



The VibroPad is recommended for use on light materials such as cardboards. This transducer will convert a picture frame or a display into a speaker. Economical speaker solution for POS advertising when used with an ID-AL amplified audio source.

- Impedance: 8 Ohms
- Rated power: 10W
- Diameter: 83mm

## 19"-1U rack bracket



For rack mounting most ID-AL players. Install one or several modules in 1/3 or 2/3 rack format and use the blanking plates to build a full rack.

## IR Handset



Infrared remote handset to control ID-AL players.

# MUSICAL DECORATION

## ART PLAYER



The audio program is changed in seconds by swapping the memory card inserted in a slot positioned on the side of the device.

The picture frame itself is fitted with a quick changeover system for straight forward replacement of the picture, poster or photo.

All-in-one musical picture frame, audio player, amplifier, flatspeaker and decorating item.

The display discreetly includes a standalone audio player and a 7W amplifier. The front face is an extra flat loudspeaker.

The integrated audio player reads audio files, in Wave and MP3 formats, stored on SD memory card.



- Decorating picture frame including an audio player, amplifier and loudspeaker
- Extra flat loudspeaker
- Wooden frame of various sizes and colors
- 14W (2x7W) amplifier
- Bandwidth : from 100Hz - 18kHz
- SD Memory card : 64Mo and over
- External 12V power supply (supplied)
- Infrared sensor
- Remote control handset (supplied)

The audio player is positioned on the side of the box, within the thickness of the frame.

Music files are stored on the memory card inserted in the dedicated slot.

Control the player with infrared remote handset provided.



## ID-AL / Waves System

La Ville en Bois

44830 BOUAYE - FRANCE

Tel : +33 (0) 2 40 78 22 44

Fax : +33 (0) 2 40 78 00 36

Mail : [info@id-al.com](mailto:info@id-al.com)

Web : [www.id-al.com](http://www.id-al.com)

