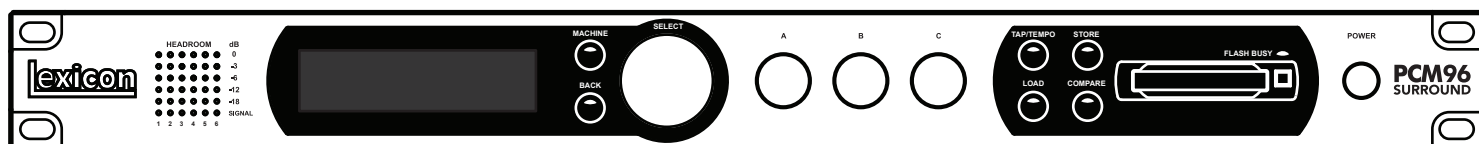


# Lexicon PCM96 Surround

Reverb/Effects Processor



**About this Guide**

This guide contains seven lists of the factory presets available in the PCM96 Surround. Each list corresponds to what will be seen depending on how the PCM96 Surround is used.

**Preset Lists:**

**Standalone Mono ..... 1**



When selecting presets for a mono machine using the PCM96 Surround's front panel controls, the presets will be organized as shown on pages 1 – 7.

**Standalone Stereo ..... 8**



When selecting presets for a stereo machine using the PCM96 Surround's front panel controls, the presets will be organized as shown on pages 8 – 17.

**Standalone Surround ..... 18**



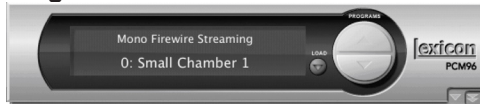
When selecting presets for a surround machine using the PCM96 Surround's front panel controls, the presets will be organized as shown on pages 18 – 27.

**Standalone Combined Presets ..... 28**



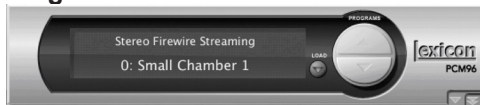
When selecting machine presets from the Preset Category Selection menu using the PCM96 Surround's front panel controls, the presets will be organized as shown on pages 28 – 29.

**Plug-In Mono ..... 30**



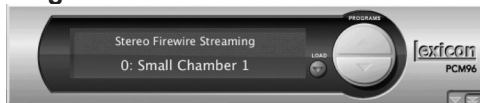
When using the PCM96 Surround via Firewire as a Mono plug-in, the presets will be organized (by algorithm type) as shown on pages 30 – 31.

**Plug-In Stereo ..... 32**



When using the PCM96 Surround via Firewire as a Stereo plug-in, the presets will be organized (by algorithm type) as shown on pages 32 – 34.

**Plug-In Surround ..... 35**



When using the PCM96 Surround via Firewire as a Surround plug-in, the presets will be organized (by algorithm type) as shown on pages 35 – 37.

# Standalone Mono Presets

Halls Small								
Preset Number	Preset Name	Algorithm	MIDI (Bank,Program)					
			Original	Dark	Light	Band	Notch	
0-3	Sml Clear Hall	Hall	(0,87)	(0,89)	(0,88)	(0,90)	-	
4-7	Sml Vocal Hall 1	Hall	(0,21)	(0,55)	(0,56)	(0,57)	-	
8-11	Sml Vocal Hall 2	Hall	(0,22)	(0,58)	(0,59)	(0,60)	-	
12-15	Sml Vocal Hall 3	Hall	(0,23)	(0,61)	(0,62)	(0,63)	-	
16-19	Sml Abrupt Hall	Hall	(0,0)	(0,1)	(0,2)	(0,3)	-	
20-23	Sml Impact Hall	Hall	(0,47)	(0,48)	(0,49)	(0,50)	-	
24-27	Sml Perc Hall	Hall	(0,51)	(0,52)	(0,53)	(0,54)	-	
28-32	Small Rhall 1	Random Hall	(1,40)	(1,41)	(1,42)	(1,43)	(1,44)	
33-35	Small Rhall 2	Random Hall	(1,45)	(1,46)	(1,47)	(1,48)	(1,49)	
38-42	Small Rhall 3	Random Hall	(1,50)	(1,51)	(1,52)	(1,53)	(1,54)	
43-47	Small Rhall 4	Random Hall	(1,55)	(1,56)	(1,57)	(1,58)	(1,59)	
48	Small Vocal Concert 1	Concert Hall	(2,10)	-	-	-	-	
49	Small Vocal Concert 2	Concert Hall	(2,1)	-	-	-	-	
50	Small Perc Concert	Concert Hall	(2,7)	-	-	-	-	

Halls Medium								
Preset Number	Preset Name	Algorithm	MIDI (Bank,Program)					
			Original	Dark	Light	Band	Notch	
0-4	Med Hall	Hall	(0,4)	(0,5)	(0,6)	(0,7)	(0,8)	
5-9	Med Deep Hall	Hall	(0,9)	(0,10)	(0,11)	(0,12)	(0,65)	
10-14	Med Vocal Hall 1	Hall	(0,24)	(0,66)	(0,67)	(0,68)	(0,75)	
15-19	Med Vocal Hall 2	Hall	(0,25)	(0,69)	(0,70)	(0,71)	(0,76)	
20-24	Med Vocal Hall 3	Hall	(0,26)	(0,72)	(0,73)	(0,74)	(0,77)	
25-29	Medium RHall 1	Random Hall	(1,0)	(1,1)	(1,2)	(1,3)	(1,4)	
30-34	Medium RHall 2	Random Hall	(1,5)	(1,6)	(1,7)	(1,8)	(1,9)	
35-39	Medium RHall 3	Random Hall	(1,10)	(1,11)	(1,12)	(1,13)	(1,14)	
40-44	Medium RHall 4	Random Hall	(1,15)	(1,16)	(1,17)	(1,18)	(1,19)	
45	Medium Vocal Concert 1	Concert Hall	(2,2)	-	-	-	-	
46	Medium Vocal Concert 2	Concert Hall	(2,3)	-	-	-	-	
47	Medium Vocal Concert 3	Concert Hall	(2,4)	-	-	-	-	
48	Medium Perc Concert	Concert Hall	(2,8)	-	-	-	-	
49	Gold Hall	Room	(5,69)	-	-	-	-	

Halls Large								
Preset Number	Preset Name	Algorithm	MIDI (Bank,Program)					
			Original	Dark	Light	Band	Notch	
0-4	Lge Vocal Hall 1	Hall	(0,27)	(0,79)	(0,80)	(0,81)	(0,105)	
5-9	Large Pop Hall	Hall	(0,82)	(0,83)	(0,84)	(0,85)	(0,86)	
10-14	Lge Vocal Hall 2	Hall	(0,28)	(0,106)	(0,107)	(0,108)	(0,109)	
15-19	Lge Vocal Hall 3	Hall	(0,29)	(0,110)	(0,111)	(0,112)	(0,113)	
20-24	Lge Vocal Hall 4	Hall	(0,30)	(0,114)	(0,115)	(0,116)	(0,117)	
25-29	Large Early Hall	Hall	(0,13)	(0,14)	(0,15)	(0,16)	(0,78)	
30-34	Large Deep Hall	Hall	(0,17)	(0,18)	(0,19)	(0,20)	(0,64)	
35-39	Large Hall	Hall	(0,99)	(0,91)	(0,92)	(0,93)	(0,94)	
40-44	Lge Neutral Hall	Hall	(0,100)	(0,95)	(0,96)	(0,97)	(0,98)	
45-49	Cathedral 1	Hall	(0,101)	(0,102)	(0,103)	(0,104)	(0,118)	
50-54	Cathedral 2	Hall	(0,119)	(0,120)	(0,121)	(0,122)	(0,123)	
55-59	Cathedral 3	Hall	(15,0)	(15,1)	(15,2)	(15,3)	(15,4)	
60-64	Ginormous Hall	Hall	(15,5)	(15,6)	(15,7)	(15,8)	(15,9)	
65-69	Large RHall 1	Random Hall	(1,60)	(1,61)	(1,62)	(1,63)	(1,64)	
70-73	Large RHall 2	Random Hall	(1,65)	(1,66)	-	(1,68)	(1,69)	
74-78	Large RHall 3	Random Hall	(1,70)	(1,71)	(1,72)	(1,73)	(1,74)	
79-83	Large RHall 4	Random Hall	(1,75)	(1,76)	(1,77)	(1,78)	(1,79)	
84-88	Concert Hall (Air Pressure)	Concert Hall	(2,0)	(2,11)	(2,12)	(2,13)	(2,14)	
89	Large Vocal Concert	Concert Hall	(2,5)	-	-	-	-	
90	Large Vocal Concert 2	Concert Hall	(2,6)	-	-	-	-	
91	Large Perc Concert	Concert Hall	(2,9)	-	-	-	-	
92	Gen. Concert	Concert Hall	(2,15)	-	-	-	-	

# Standalone Mono Presets

Plates Small								
Preset Number	Preset Name	Algorithm	MIDI (Bank,Program)					
			Original	Dark	Light	Band	Notch	
0-4	Small Plate 1	Plate	(4,0)	(4,1)	(4,2)	(4,3)	(4,4)	
5-9	Small Plate 2	Plate	(4,5)	(4,6)	(4,7)	(4,8)	(4,9)	
10-14	Small Plate 3	Plate	(4,10)	(4,11)	(4,12)	(4,13)	(4,14)	
15-19	Small Plate 4	Plate	(4,15)	(4,16)	(4,17)	(4,18)	(4,19)	
20-24	Shrt Slap Plate 1	Plate	(4,85)	(4,86)	(4,87)	(4,88)	(4,89)	
25-29	Shr Slap Plate(T)	Plate	(4,90)	(4,91)	(4,92)	(4,93)	(4,94)	

Plates Medium								
Preset Number	Preset Name	Algorithm	MIDI (Bank,Program)					
			Original	Dark	Light	Band	Notch	
0-4	Medium Plate 1	Plate	(4,20)	(4,21)	(4,22)	(4,23)	(4,24)	
5-9	Medium Plate 2	Plate	(4,25)	(4,26)	(4,27)	(4,28)	(4,29)	
10-14	Medium Plate 3	Plate	(4,30)	(4,31)	(4,32)	(4,33)	(4,34)	
15-19	Medium Plate 4	Plate	(4,35)	(4,36)	(4,37)	(4,38)	(4,39)	
20-24	Colored Plate 1	Plate	(4,70)	(4,71)	(4,72)	(4,73)	(4,74)	
25-29	Colored Plate 2	Plate	(4,75)	(4,76)	(4,77)	(4,78)	(4,79)	
30-34	Colored Plate 3	Plate	(4,80)	(4,81)	(4,82)	(4,83)	(4,84)	

Plates Large								
Preset Number	Preset Name	Algorithm	MIDI (Bank,Program)					
			Original	Dark	Light	Band	Notch	
0-4	Large Plate 1	Plate	(4,40)	(4,41)	(4,42)	(4,43)	(4,44)	
5-9	Large Plate 2	Plate	(4,45)	(4,46)	(4,47)	(4,48)	(4,49)	
10-14	Large Plate 3	Plate	(4,50)	(4,51)	(4,52)	(4,53)	(4,54)	
15-19	Large Plate 4	Plate	(4,55)	(4,56)	(4,57)	(4,58)	(4,59)	
20-24	Giant Plate	Plate	(4,60)	(4,61)	(4,62)	(4,63)	(4,64)	
25-29	Echo Plate (T)	Plate	(4,95)	(4,96)	(4,97)	(4,98)	(4,99)	
30-34	Infinite Plate	Plate	(4,65)	(4,66)	(4,67)	(4,68)	(4,69)	

Chambers Small								
Preset Number	Preset Name	Algorithm	MIDI (Bank,Program)					
			Original	Dark	Light	Band	Notch	
0-4	Small Chamber 1	Chamber	(3,5)	(3,6)	(3,7)	(3,8)	(3,9)	
5-9	Small Chamber 2	Chamber	(3,35)	(3,36)	(3,37)	(3,38)	(3,39)	
10-14	Small Chamber 3	Chamber	(3,40)	(3,41)	(3,42)	(3,43)	(3,44)	

Chambers Medium								
Preset Number	Preset Name	Algorithm	MIDI (Bank,Program)					
			Original	Dark	Light	Band	Notch	
0-4	Medium Chamber 1	Chamber	(3,0)	(3,1)	(3,2)	(3,3)	(3,4)	
5-9	Medium Chamber 2	Chamber	(3,50)	(3,51)	(3,52)	(3,53)	(3,54)	
10-14	Med Vocal Chamb	Chamber	(3,45)	(3,46)	(3,47)	(3,48)	(3,49)	
15-19	Med Slap Chamber	Chamber	(3,15)	(3,16)	(3,17)	(3,18)	(3,19)	
20-24	Slap Chamb 1 (T)	Chamber	(3,56)	(3,57)	(3,58)	(3,59)	(3,60)	
25-29	Slap Chamb 2 (T)	Chamber	(3,61)	(3,62)	(3,63)	(3,64)	(3,65)	
30	EM7 Medium Chamber	Chamber	(3,55)	-	-	-	-	

Chambers Large								
Preset Number	Preset Name	Algorithm	MIDI (Bank,Program)					
			Original	Dark	Light	Band	Notch	
0-4	Large Chamber 1	Chamber	(3,10)	(3,11)	(3,12)	(3,13)	(3,14)	
5-9	Deep Chamber 1	Chamber	(3,20)	(3,21)	(3,22)	(3,23)	(3,24)	
10-14	Deep Chamber 2	Chamber	(3,25)	(3,26)	(3,27)	(3,28)	(3,29)	
15-19	Infinite Chamber	Chamber	(3,30)	(3,31)	(3,32)	(3,33)	(3,34)	

# Standalone Mono Presets

Rooms Small						
Preset Number	Preset Name	Algorithm	MIDI (Bank,Program)			
			Original	Dark	Light	Band
0	Small Playroom	Room	(5,0)	-	-	-
1	Clothes Closet 1	Room	(5,93)	-	-	-
2	Clothes Closet 2	Room	(5,94)	-	-	-
3	Auto Interior 1	Room	(5,95)	-	-	-
4	Auto Interior 2	Room	(5,96)	-	-	-
5	Coffin	Room	(5,97)	-	-	-
6	Small Tight Room 1	Room	(5,54)	-	-	-
7	Small Tight Room 2	Room	(5,55)	-	-	-
8	Small Tight Room 3	Room	(5,56)	-	-	-
9	Small Tight Room 4	Room	(5,57)	-	-	-
10	Small Tight Room 5	Room	(5,58)	-	-	-
11	Small Tight Room 6	Room	(5,59)	-	-	-
12	Small Tight Room 7	Room	(5,60)	-	-	-
13	Small Live Room 1	Room	(5,61)	-	-	-
14	Small Live Room 2	Room	(5,62)	-	-	-
15	Small Live Room 3	Room	(5,63)	-	-	-
16	Small Live Room 4	Room	(5,64)	-	-	-
17	Small Live Room 5	Room	(5,65)	-	-	-
18	Small Live Room 6	Room	(5,66)	-	-	-
19	Small Live Room 7	Room	(5,67)	-	-	-
20	Small Live Room 8	Room	(5,68)	-	-	-
21-24	Studio A	Random Hall	(1,35)	(1,36)	(1,37)	(1,38)
25-28	Studio B	Random Hall	(1,20)	(1,21)	(1,22)	(1,23)
29-32	Studio C	Random Hall	(1,25)	(1,26)	(1,27)	(1,28)
33-36	Studio D	Random Hall	(1,30)	(1,31)	(1,32)	(1,33)
37-40	Studio E	Hall	(0,31)	(0,32)	(0,33)	(0,34)
41-44	Studio F	Hall	(0,35)	(0,36)	(0,37)	(0,38)
45-48	Studio G	Hall	(0,39)	(0,40)	(0,41)	(0,42)
49-52	Studio H	Hall	(0,43)	(0,44)	(0,45)	(0,46)
53	Air Pressure	Concert Hall	(2,18)	-	-	-
54	Bedroom	Concert Hall	(2,17)	-	-	-
55	Cabin Fever	Concert Hall	(2,16)	-	-	-

# Standalone Mono Presets

Rooms Medium			
Preset Number	Program Name	Algorithm	MIDI (Bank,Program)
0	Medium Playroom	Room	(5,1)
1	Mausoleum	Room	(5,98)
2	Medium Dead Room 1	Room	(5,14)
3	Medium Dead Room 2	Room	(5,15)
4	Medium Dead Room 3	Room	(5,16)
5	Medium Dead Room 4	Room	(5,17)
6	Medium Dead Room 5	Room	(5,18)
7	Medium Dead Room 6	Room	(5,19)
8	Medium Dead Room 7	Room	(5,20)
9	Medium Dead Room 8	Room	(5,21)
10	Medium Dead Room 9	Room	(5,22)
11	Medium Dead Room 10	Room	(5,23)
12	Medium Live Room 1	Room	(5,24)
13	Medium Live Room 2	Room	(5,25)
14	Medium Live Room 3	Room	(5,26)
15	Medium Live Room 4	Room	(5,27)
16	Medium Live Room 5	Room	(5,28)
17	Medium Live Room 6	Room	(5,29)
18	Medium Live Room 7	Room	(5,30)
19	Medium Live Room 8	Room	(5,31)
20	Medium Live Room 9	Room	(5,32)
21	Medium Live Room 10	Room	(5,33)
22	Medium Hallway 1	Room	(5,11)
23	Medium Hallway 2	Room	(5,12)
24	Medium Hallway 3	Room	(5,13)
25	Restroom 1	Room	(5,8)
26	Restroom 2	Room	(5,9)
27	Restroom 3	Room	(5,10)
28	Locker Room 1	Room	(5,5)
29	Locker Room 2	Room	(5,6)
30	Locker Room 3	Room	(5,7)
31	Ambience	Room	(5,71)
32	Cinema Room	Room	(5,70)

Rooms Large			
Preset Number	Program Name	Algorithm	MIDI (Bank,Program)
0	Large Playroom	Room	(5,2)
1	Large Stairwell 1	Room	(5,99)
2	Large Stairwell 2	Room	(5,100)
3	Large Stairwell 3	Room	(5,101)
4	Large Tight Room 1	Room	(5,46)
5	Large Tight Room 2	Room	(5,47)
6	Large Tight Room 3	Room	(5,48)
7	Large Tight Room 4	Room	(5,49)
8	Large Tight Room 5	Room	(5,50)
9	Large Tight Room 6	Room	(5,51)
10	Large Tight Room 7	Room	(5,52)
11	Large Tight Room 8	Room	(5,53)
12	Large Live Room 1	Room	(5,38)
13	Large Live Room 2	Room	(5,39)
14	Large Live Room 3	Room	(5,40)
15	Large Live Room 4	Room	(5,41)
16	Large Live Room 5	Room	(5,42)

# Standalone Mono Presets

Rooms Evironments			
Preset Number	Program Name	Algorithm	MIDI (Bank,Program)
0	Exterior Playroom	Room	(5,3)
1	Odd Playroom	Room	(5,4)
2	City Street	Room	(5,43)
3	City Sidewalk	Room	(5,44)
4	In a Cavern	Room	(5,45)
5	At the Forum	Room	(5,34)
6	Michael's Backyard	Room	(5,35)
7	Sideyard	Room	(5,36)
8	Driveway Slap	Room	(5,37)
9	Block Party	Concert Hall	(2,19)
10	Dracula's Tomb	Room	(5,102)
11	Dracula's Summer Tomb	Room	(5,103)

Effects Chorus/Flange			
Preset Number	Preset Name	Algorithm	MIDI (Bank,Program)
0	Flanger 1	Chorus	(8,0)
1	Flanger 2	Chorus	(8,1)
2	Flanger 3	Chorus	(8,2)
3	Flanger 4	Chorus	(8,3)
4	Flanger 5	Chorus	(8,4)
5	Flanger 6	Chorus	(8,5)
6	Rolling Flange	Chorus	(8,6)
7	Smearred Chorus	Chorus	(8,7)
8	Midrange Chorus 1	Chorus	(8,8)
9	Midrange Chorus 2	Chorus	(8,9)
10	Highpass Chorus 1	Chorus	(8,10)
11	Highpass Chorus 2	Chorus	(8,11)
12	Bandpass Chorus 1	Chorus	(8,12)
13	Bandpass Chorus 2	Chorus	(8,13)
14	Delay Chorus 1	Chorus	(8,14)
15	Delay Chorus 2	Chorus	(8,15)
16	Delay Chorus 3	Chorus	(8,16)

Effects Delay			
Preset Number	Preset Name	Algorithm	MIDI (Bank,Program)
0	Simple Mono Delay	Dual Delay	(6,5)
1	Simple Mono Delay (T)	Dual Delay	(6,6)
2	Tempo Shuffle	Dual Delay	(6,0)
3	Tempo Shuffle 2	Dual Delay	(6,2)
4	DualDelay	Dual Delay	(6,1)
5	Boucing Ball	Dual Delay	(6,3)
6	Short Delay-O-Plex	Dual Delay	(6,4)
7	RandomDelay	Random Delay	(7,0)
8	Short Delay-O-Plex 2	Random Delay	(7,1)
9	Wacky-Plex 1	Random Delay	(7,2)
10	Wacky-Plex 2	Random Delay	(7,3)
11	Wacky-Plex 3	Random Delay	(7,4)
12	Wacky-Plex 4	Random Delay	(7,5)
13	Wacky-Plex 5	Random Delay	(7,6)
14	BeeBee Slapz	Concert Hall	(2,20)

# Standalone Mono Presets

Effects Resonance			
Preset Number	Preset Name	Algorithm	MIDI (Bank,Program)
0	Jimi Strum	Resonant Chords	(9,0)
1	C Quartal	Resonant Chords	(9,12)
2	C# Quartal	Resonant Chords	(9,11)
3	D Quartal	Resonant Chords	(9,1)
4	D# Quartal	Resonant Chords	(9,2)
5	E Quartal	Resonant Chords	(9,3)
6	F Quartal	Resonant Chords	(9,4)
7	F# Quartal	Resonant Chords	(9,5)
8	G Quartal	Resonant Chords	(9,6)
9	G# Quartal	Resonant Chords	(9,7)
10	A Quartal	Resonant Chords	(9,8)
11	A# Quartal	Resonant Chords	(9,9)
12	B Quartal	Resonant Chords	(9,10)

Effects Reverse			
Preset Number	Preset Name	Algorithm	MIDI (Bank,Program)
0	Reverse 1	Room	(5,72)
1	Thin Reverse 1	Room	(5,73)
2	Dull Reverse 1	Room	(5,74)
3	Reverse 2	Room	(5,75)
4	Thin Reverse 2	Room	(5,76)
5	Dull Reverse 2	Room	(5,77)
6	Reverse 3	Room	(5,78)
7	Thin Reverse 3	Room	(5,79)
8	Dull Reverse 3	Room	(5,80)
9	Reverse 4	Room	(5,81)
10	Thin Reverse 4	Room	(5,82)
11	Dull Reverse 4	Room	(5,83)
12	Reverse 5	Room	(5,86)
13	Thin Reverse 5	Room	(5,87)
14	Dull Reverse 5	Room	(5,88)
15	Forward & Reverse	Room	(5,84)
16	Plastic Reverse	Room	(5,85)
17	Reverse & Tail 1	Room	(5,89)
18	Reverse & Tail 2	Room	(5,90)
19	Reverse & Wall 1	Room	(5,91)
20	Reverse & Wall 2	Room	(5,92)

Pitch Shift			
Preset Number	Preset Name	Algorithm	MIDI (Bank,Program)
0	Shift Up 4%	VSO Shift	(12,0)
1	Shift Down 4%	VSO Shift	(12,1)
2	Shift Up a Semitone	VSO Shift	(12,64)
3	Shift Dn a Semitone	VSO Shift	(12,65)

Pitch Effects			
Preset Number	Preset Name	Algorithm	MIDI (Bank,Program)
0	Staircase Up	Multi Voice Shift	(13,0)
1	Staircase Down	Multi Voice Shift	(13,1)
2	Wedge	Multi Voice Shift	(13,2)
3	Thin Fattener	Multi Voice Shift	(13,3)
4	Medium Fattener	Multi Voice Shift	(13,4)
5	Fat Fattener	Multi Voice Shift	(13,5)
6	Pitched Echo 1	Multi Voice Shift	(13,6)
7	Pitched Echo 2	Multi Voice Shift	(13,7)



## Standalone Mono Presets

Tools			
Preset Number	Preset Name	Algorithm	MIDI (Bank,Program)
0	Audio Pass-Thru	Thru	(11,0)
1	Audio Mute	Thru	(11,1)
2	Decorrelated Pink Noise	Signal Generator	(11,2)
3	Correlated Pink Noise	Signal Generator	(11,3)
4	Sine @ -6dB	Signal Generator	(11,4)
5	Sweep @ -6dB	Phone Futz	(11,5)
6	Pink Click	Dual Delay	(11,6)

# Standalone Stereo Presets

Halls Small						
Preset Number	Preset Name	Algorithm	MIDI (Bank,Program)			
			Original	Dark	Light	Band
0-4	Sml Narrow Hall	Hall	(24,43)	(24,44)	(24,45)	(24,46)
5-9	Sml Wide Hall	Hall	(24,47)	(24,48)	(24,49)	(24,50)
10-14	Sml Impact Hall	Hall	(24,39)	(24,40)	(24,41)	(24,42)
15-19	Sml Perc Hall	Hall	(24,51)	(24,52)	(24,53)	(24,54)
20-24	Sml Clear Hall	Hall	(24,10)	(24,9)	(24,11)	(24,55)
25-29	Sml Vocal Hall 1	Hall	(24,12)	(24,56)	(24,57)	(24,58)
30-34	Sml Vocal Hall 2	Hall	(24,13)	(24,59)	(24,60)	(24,61)
35-39	Sml Vocal Hall 3	Hall	(24,14)	(24,62)	(24,63)	(24,64)
40-44	Sml Abrupt Hall	Hall	(24,6)	(24,65)	(24,66)	(24,67)
45-49	Small RHall 1	Random Hall	(25,3)	(25,14)	(25,18)	(25,42)
50-54	Small RHall 2	Random Hall	(25,11)	(25,15)	(35,19)	(25,43)
55-59	Small RHall 3	Random Hall	(25,12)	(25,16)	(25,20)	(25,44)
60-64	Small RHall 4	Random Hall	(25,13)	(25,17)	(25,21)	(25,45)
65	Small Vocal Concert 1	Concert Hall	(26,7)	-	-	-
66	Small Vocal Concert 2	Concert Hall	(26,8)	-	-	-
67	Small Perc Concert	Concert Hall	(26,14)	-	-	-

Halls Medium						
Preset Number	Preset Name	Algorithm	MIDI (Bank,Program)			
			Original	Dark	Light	Band
0-4	Med Hall	Hall	(24,7)	(24,77)	(24,78)	(24,79)
5-9	Med Deep Hall	Hall	(24,91)	(24,92)	(24,93)	(24,94)
10-14	Med Vocal Hall 1	Hall	(24,15)	(24,68)	(24,69)	(24,70)
15-19	Med Vocal Hall 2	Hall	(24,16)	(24,71)	(24,72)	(24,73)
20-24	Med Vocal Hall 3	Hall	(24,17)	(24,74)	(24,75)	(24,76)
25-29	Med Narrow Hall	Hall	(24,8)	(24,21)	(24,80)	(24,81)
30-34	Med Wide Hall	Hall	(24,82)	(24,83)	(24,84)	(24,85)
35	Gold Hall	Room	(29,62)	-	-	-
36-40	Medium RHall 1	Random Hall	(25,0)	(25,8)	(25,23)	(25,46)
41-45	Medium RHall 2	Random Hall	(25,5)	(25,9)	(25,24)	(25,47)
46-50	Medium RHall 3	Random Hall	(25,6)	(25,10)	(25,25)	(25,48)
51-55	Medium RHall 4	Random Hall	(25,7)	(25,22)	(25,26)	(25,49)
56	Medium Vocal Concert 1	Concert Hall	(26,9)	-	-	-
57	Medium Vocal Concert 2	Concert Hall	(26,10)	-	-	-
58	Medium Vocal Concert 3	Concert Hall	(26,11)	-	-	-
59	Medium Perc Concert	Concert Hall	(26,15)	-	-	-

# Standalone Stereo Presets

Halls Large						
Preset Number	Preset Name	Algorithm	MIDI (Bank,Program)			
			Original	Dark	Light	Band
0-4	Large Hall	Hall	(24,0)	(24,95)	(24,96)	(24,97)
5-9	Large Early Hall	Hall	(24,98)	(24,99)	(24,100)	(24,101)
10-14	Large Deep Hall	Hall	(24,102)	(24,103)	(24,104)	(24,105)
15-19	Large Wide Hall	Hall	(24,106)	(24,107)	(24,108)	(24,109)
20-24	Lge Narrow Hall	Hall	(24,110)	(24,111)	(24,112)	(24,113)
25-29	Lge Vocal Hall 1	Hall	(24,114)	(24,115)	(24,116)	(24,117)
30-34	Lge Vocal Hall 2	Hall	(24,18)	(39,20)	(39,21)	(39,22)
35-39	Lge Vocal Hall 3	Hall	(24,19)	(39,24)	(39,25)	(39,26)
40-44	Lge Vocal Hall 4	Hall	(24,20)	(39,28)	(39,29)	(39,30)
45-49	Lge Neutral Hall	Hall	(24,1)	(24,3)	(24,4)	(24,120)
50-54	Large Pop Hall	Hall	(24,2)	(24,5)	(24,122)	(24,123)
55-59	Ginormous Hall	Hall	(39,12)	(39,13)	(39,14)	(39,15)
60-64	Cathedral 1	Hall	(39,0)	(39,1)	(39,2)	(39,3)
65-69	Cathedral 2	Hall	(39,4)	(39,5)	(39,6)	(39,7)
70-74	Cathedral 3	Hall	(39,8)	(39,9)	(39,10)	(39,11)
75	EM7 Large Hall	Hall	(24,86)	-	-	-
76-80	Large RHall 1	Random Hall	(25,50)	(25,51)	(25,52)	(25,53)
81-85	Large RHall 2	Random Hall	(25,54)	(25,55)	(25,56)	(25,57)
86-90	Large RHall 3	Random Hall	(25,58)	(25,59)	(25,60)	(25,61)
91-95	Large RHall 4	Random Hall	(25,62)	(25,63)	(25,64)	(25,65)
96-100	Concert Hall	Concert Hall	(26,0)	(26,17)	(26,18)	(26,19)
101	Large Vocal Concert	Concert Hall	(26,12)	-	-	-
102	Large Vocal Concert 2	Concert Hall	(26,13)	-	-	-
103	Large Perc Concert	Concert Hall	(26,16)	-	-	-
104	Gen. Concert	Concert Hall	(26,6)	-	-	-

Plates Small						
Preset Number	Preset Name	Algorithm	MIDI (Bank,Program)			
			Original	Dark	Light	Band
0-4	Small Plate 1	Plate	(28,0)	(28,1)	(28,2)	(28,3)
5-9	Small Plate 2	Plate	(28,5)	(28,6)	(28,7)	(28,8)
10-14	Small Plate 3	Plate	(28,10)	(28,11)	(28,12)	(28,13)
15-19	Small Plate 4	Plate	(28,15)	(28,16)	(28,17)	(28,18)
20-24	Shrt Slap Plate 1	Plate	(28,85)	(28,86)	(28,87)	(28,88)
25-29	Shr Slap Plate(T)	Plate	(28,90)	(28,91)	(28,92)	(28,93)

Plates Medium						
Preset Number	Preset Name	Algorithm	MIDI (Bank,Program)			
			Original	Dark	Light	Band
0-4	Medium Plate 1	Plate	(28,20)	(28,21)	(28,22)	(28,23)
5-9	Medium Plate 2	Plate	(28,25)	(28,26)	(28,27)	(28,28)
10-14	Medium Plate 3	Plate	(28,30)	(28,31)	(28,32)	(28,33)
15-19	Medium Plate 4	Plate	(28,35)	(28,36)	(28,37)	(28,38)
20-24	Colored Plate 1	Plate	(28,70)	(28,71)	(28,72)	(28,73)
25-29	Colored Plate 2	Plate	(28,75)	(28,76)	(28,77)	(28,78)
30-34	Colored Plate 3	Plate	(28,80)	(28,81)	(28,82)	(28,83)

Plates Large						
Preset Number	Preset Name	Algorithm	MIDI (Bank,Program)			
			Original	Dark	Light	Band
0-4	Large Plate 1	Plate	(28,40)	(28,41)	(28,42)	(28,43)
5-9	Large Plate 2	Plate	(28,45)	(28,46)	(28,47)	(28,48)
10-14	Large Plate 3	Plate	(28,50)	(28,51)	(28,52)	(28,53)
15-19	Large Plate 4	Plate	(28,55)	(28,56)	(28,57)	(28,58)
20-24	Giant Plate	Plate	(28,60)	(28,61)	(28,62)	(28,63)
25-29	Echo Plate (T)	Plate	(28,95)	(28,96)	(28,97)	(28,98)
30-34	Infinite Plate	Plate	(28,65)	(28,66)	(28,67)	(28,68)

# Standalone Stereo Presets

Chambers Small						
Preset Number	Preset Name	Algorithm	MIDI (Bank,Program)			
			Original	Dark	Light	Band
0-4	Small Chamber 1	Chamber	(27,5)	(27,6)	(27,7)	(27,8)
5-9	Small Chamber 2	Chamber	(27,55)	(27,56)	(27,57)	(27,58)
10-14	Small Chamber 3	Chamber	(27,60)	(27,61)	(27,62)	(27,63)

Chambers Medium						
Preset Number	Preset Name	Algorithm	MIDI (Bank,Program)			
			Original	Dark	Light	Band
0-4	Medium Chamber 1	Chamber	(27,0)	(27,1)	(27,2)	(27,3)
5-9	Medium Chamber 2	Chamber	(27,70)	(27,71)	(27,72)	(27,73)
10-14	Med Vocal Chamb	Chamber	(27,65)	(27,66)	(27,67)	(27,68)
15-19	Med Slap Chamber	Chamber	(27,15)	(27,16)	(27,17)	(27,18)
20-24	Slap Chamb 1 (T)	Chamber	(27,20)	(27,21)	(27,22)	(27,23)
25-29	Slap Chamb 2 (T)	Chamber	(27,25)	(27,26)	(27,27)	(27,28)
30	EM7 Medium Chamber	Chamber	(27,75)	-	-	-

Chambers Large						
Preset Number	Preset Name	Algorithm	MIDI (Bank,Program)			
			Original	Dark	Light	Band
0-4	Large Chamber 1	Chamber	(27,10)	(27,11)	(27,12)	(27,13)
5-9	Lge Wide Chamber	Chamber	(27,40)	(27,41)	(27,42)	(27,43)
10-14	Lge Narrow Chamber	Chamber	(27,45)	(27,46)	(27,47)	(27,48)
15-19	Deep Chamber 1	Chamber	(27,30)	(27,31)	(27,32)	(27,33)
20-24	Deep Chamber 2	Chamber	(27,35)	(27,36)	(27,37)	(27,38)
25-29	Infinite Chamber	Chamber	(27,50)	(27,51)	(27,52)	(27,53)

Rooms Small						
Preset Number	Preset Name	Algorithm	MIDI (Bank,Program)			
			Original	Dark	Light	Band
0	Small Playroom	Room	(29,0)	-	-	-
1	Clothes Closet 1	Room	(29,96)	-	-	-
2	Clothes Closet 2	Room	(29,97)	-	-	-
3	Auto Interior 1	Room	(29,98)	-	-	-
4	Auto Interior 2	Room	(29,99)	-	-	-
5	Coffin	Room	(29,100)	-	-	-
6	Small Tight Room 1	Room	(29,6)	-	-	-
7	Small Tight Room 2	Room	(29,7)	-	-	-
8	Small Tight Room 3	Room	(29,8)	-	-	-
9	Small Tight Room 4	Room	(29,9)	-	-	-
10	Small Tight Room 5	Room	(29,10)	-	-	-
11	Small Tight Room 6	Room	(29,11)	-	-	-
12	Small Tight Room 7	Room	(29,12)	-	-	-
13	Small Live Room 1	Room	(29,13)	-	-	-
14	Small Live Room 2	Room	(29,14)	-	-	-
15	Small Live Room 3	Room	(29,15)	-	-	-
16	Small Live Room 4	Room	(29,16)	-	-	-
17	Small Live Room 5	Room	(29,17)	-	-	-
18	Small Live Room 6	Room	(29,18)	-	-	-
19	Small Live Room 7	Room	(29,19)	-	-	-
20	Small Live Room 8	Room	(29,20)	-	-	-
21-24	Studio A	Random Hall	(25,4)	(25,30)	(25,34)	(25,38)
25-28	Studio B	Random Hall	(25,27)	(25,31)	(25,35)	(25,39)
29-32	Studio C	Random Hall	(25,28)	(25,32)	(25,36)	(25,40)
33-36	Studio D	Random Hall	(25,29)	(25,33)	(25,37)	(25,41)
37-40	Studio E	Hall	(24,23)	(24,24)	(24,25)	(24,26)
41-44	Studio F	Hall	(24,27)	(24,28)	(24,29)	(24,30)
45-48	Studio G	Hall	(24,31)	(24,32)	(24,33)	(24,34)
49-52	Studio H	Hall	(24,35)	(24,36)	(24,37)	(24,38)
53	Air Pressure	Concert Hall	(26,1)	-	-	-
54	Bedroom	Concert Hall	(26,2)	-	-	-
55	Cabin Fever	Concert Hall	(26,5)	-	-	-

# Standalone Stereo Presets

Rooms Medium			
Preset Number	Program Name	Algorithm	MIDI (Bank,Program)
0	Medium Playroom	Room	(29,1)
1	Mausoleum	Room	(29,101)
2	Medium Tight Room 1	Room	(29,21)
3	Medium Tight Room 2	Room	(29,22)
4	Medium Tight Room 3	Room	(29,23)
5	Medium Tight Room 4	Room	(29,24)
6	Medium Tight Room 5	Room	(29,25)
7	Medium Tight Room 6	Room	(29,26)
8	Medium Tight Room 7	Room	(29,27)
9	Medium Tight Room 8	Room	(29,28)
10	Medium Live Room 1	Room	(29,64)
11	Medium Live Room 2	Room	(29,65)
12	Medium Live Room 3	Room	(29,66)
13	Medium Live Room 4	Room	(29,67)
14	Medium Live Room 5	Room	(29,68)
15	Medium Live Room 6	Room	(29,69)
16	Medium Live Room 7	Room	(29,70)
17	Medium Live Room 8	Room	(29,71)
18	Medium Live Room 9	Room	(29,72)
19	Medium Live Room 10	Room	(29,73)
20	Medium Hallway 1	Room	(29,74)
21	Medium Hallway 2	Room	(29,75)
22	Medium Hallway 3	Room	(29,76)
23	Restroom 1	Room	(29,87)
24	Restroom 2	Room	(29,88)
25	Restroom 3	Room	(29,89)
26	Locker Room 1	Room	(29,90)
27	Locker Room 2	Room	(29,91)
28	Locker Room 3	Room	(29,92)
29	Ambience	Room	(29,5)
30	Cinema Room	Room	(29,63)

Rooms Large			
Preset Number	Program Name	Algorithm	MIDI (Bank,Program)
0	Large Playroom	Room	(29,2)
1	Large Stairwell 1	Room	(29,93)
2	Large Stairwell 2	Room	(29,94)
3	Large Stairwell 3	Room	(29,95)
4	Large Tight Room 1	Room	(29,77)
5	Large Tight Room 2	Room	(29,78)
6	Large Tight Room 3	Room	(29,79)
7	Large Tight Room 4	Room	(29,80)
8	Large Tight Room 5	Room	(29,81)
9	Large Tight Room 6	Room	(29,82)
10	Large Tight Room 7	Room	(29,83)
11	Large Tight Room 8	Room	(29,84)
12	Large Tight Room 9	Room	(29,85)
13	Large Tight Room 10	Room	(29,86)
14	Large Live Room 1	Room	(29,29)
15	Large Live Room 2	Room	(29,30)
16	Large Live Room 3	Room	(29,31)
17	Large Live Room 4	Room	(29,32)
18	Large Live Room 5	Room	(29,33)

# Standalone Stereo Presets

Rooms Environments			
Preset Number	Program Name	Algorithm	MIDI (Bank,Program)
0	Exterior Playroom	Room	(29,3)
1	Odd Playroom	Room	(29,4)
2	City Street	Room	(29,34)
3	City Sidewalk	Room	(29,35)
4	In a Cavern	Room	(29,36)
5	At the Forum	Room	(29,37)
6	Michael's Backyard	Room	(29,38)
7	Sideyard	Room	(29,39)
8	Driveway Slap	Room	(29,40)
9	Block Party	Concert Hall	(26,4)
10	Kettle Room 1	Resonant Chords	(33,25)
11	Kettle Room 2	Resonant Chords	(33,26)
12	Kettle Room 3	Resonant Chords	(33,33)
13	Kettle Room 4	Resonant Chords	(33,34)
14	Kettle Room 5	Resonant Chords	(33,35)
15	Kettle Room 6	Resonant Chords	(33,36)
16	Awful Delay Room 1	Dual Delay	(30,8)
17	Awful Delay Room 2	Dual Delay	(30,9)
18	Awful Delay Room 3	Dual Delay	(30,10)
19	Seasick Room 1	Chorus	(32,23)
20	Seasick Room 2	Chorus	(32,24)
21	Seasick Room 3	Chorus	(32,25)
22	Bubble Room	Chorus	(32,26)
23	Dracula's Tomb	Room	(29,102)
24	Dracula's Summer Tomb	Room	(29,103)
25	Ltl Cottonwood Canyon	Room	(29,107)
26	Big Cottonwood Canyon	Room	(29,108)
27	Bryce Canyon	Room	(29,109)
28	Grand Canyon	Room	(29,110)
29	High Canyon	Room	(29,104)
30	Slot Canyon	Room	(29,105)
31	Box Canyon	Room	(29,106)
32	Echo Canyon 1	Dual Delay	(30,13)
33	Echo Canyon 2	Dual Delay	(30,14)
34	Echo Canyon 3	Resonant Chords	(33,49)

## Standalone Stereo Presets

Effects Chorus/Flange			
Preset Number	Program Name	Algorithm	MIDI (Bank,Program)
0	Flanger 1	Chorus	(32,0)
1	Flanger 2	Chorus	(32,18)
2	Flanger 3	Chorus	(32,19)
3	Flanger 4	Chorus	(32,20)
4	Flanger 5	Chorus	(32,21)
5	Flanger 6	Chorus	(32,22)
6	Random Flanger	Chorus	(32,37)
7	Rolling Flange	Chorus	(32,17)
8	Flanger Falling	Chorus	(32,27)
9	Flanger Falling Up	Chorus	(32,28)
10	Flanger Freaking Out	Chorus	(32,29)
11	Narrow Barely Chorus	Chorus	(32,1)
12	Narrow Medium Chorus	Chorus	(32,2)
13	Narrow Churn Chorus	Chorus	(32,3)
14	Wide Barely Chorus	Chorus	(32,4)
15	Wide Medium Chorus	Chorus	(32,5)
16	Wide Churn Chorus	Chorus	(32,6)
17	Smearred Chorus	Chorus	(32,7)
18	Midrange Chorus 1	Chorus	(32,8)
19	Midrange Chorus 2	Chorus	(32,9)
20	Highpass Chorus 1	Chorus	(32,10)
21	Highpass Chorus 2	Chorus	(32,11)
22	Bandpass Chorus 1	Chorus	(32,12)
23	Bandpass Chorus 2	Chorus	(32,13)
24	Delay Chorus 1	Chorus	(32,14)
25	Delay Chorus 2	Chorus	(32,15)
26	Delay Chorus 3	Chorus	(32,16)
27	Dynamic Chorus 1	Chorus	(32,38)
28	Dynamic Chorus 2	Chorus	(32,39)
29	Dynamic Chorus 3	Chorus	(32,40)
30	Vibrato	Chorus	(32,30)
31	Squirrely Pitch	Chorus	(32,31)
32	Squirrely Pitch 2	Chorus	(32,32)
33	VibraToad	Chorus	(32,33)
34	VibraToad 2	Chorus	(32,34)
35	VibraToad 3	Chorus	(32,35)
36	Nasty VibraToad	Chorus	(32,36)

## Standalone Stereo Presets

Effects Delay			
Preset Number	Program Name	Algorithm	MIDI (Bank,Program)
0	Simple Stereo Delay	Dual Delay	(30,15)
1	Simple Stereo Delay (T)	Dual Delay	(30,16)
2	DualDelay	Dual Delay	(30,0)
3	Tempo Shuffle	Dual Delay	(30,1)
4	Tempo Shuffle 2	Dual Delay	(30,2)
5	Machine Gun L/R	Dual Delay	(30,3)
6	Machine Gun R/L	Dual Delay	(30,4)
7	Bouncing Ball L/R	Dual Delay	(30,5)
8	Bouncing Ball R/L	Dual Delay	(30,6)
9	Bouncing Ball Ctr	Dual Delay	(30,7)
10	Short Delay-O-Plex	Dual Delay	(30,11)
11	Asymmetric Delay-O-Plex	Dual Delay	(30,12)
12	RandomDelay	Random Delay	(31,0)
13	RandomDelay 2	Random Delay	(31,7)
14	Dynamic Random Delay 1	Random Delay	(31,11)
15	Dynamic Random Delay 2	Random Delay	(31,12)
16	Moving Delay 1	Random Delay	(31,13)
17	Moving Delay 2	Random Delay	(31,14)
18	Moving Delay 3	Random Delay	(31,15)
19	Short Delay-O-Plex 2	Random Delay	(31,1)
20	Wacky-Plex 1	Random Delay	(31,2)
21	Wacky-Plex 2	Random Delay	(31,3)
22	Wacky-Plex 3	Random Delay	(31,4)
23	Wacky-Plex 4	Random Delay	(31,5)
24	Wacky-Plex 5	Random Delay	(31,6)
25	Rezzo Delay	Random Delay	(31,8)
26	Rezzo Delay 2	Random Delay	(31,9)
27	Rezzo Delay 3	Random Delay	(31,10)
28	BeeBee Slapz	Concert Hall	(26,3)



# Standalone Stereo Presets

Effects Resonance			
Preset Number	Program Name	Algorithm	MIDI (Bank,Program)
0	Jimi Strum	Resonant Chords	(33,0)
1	Diatonic Strum	Resonant Chords	(33,52)
2	Something 2 Strum	Resonant Chords	(33,53)
3	C-maj Scale Strum	Resonant Chords	(33,1)
4	C#-maj Scale Strum	Resonant Chords	(33,2)
5	D-maj Scale Strum	Resonant Chords	(33,3)
6	D#-maj Scale Strum	Resonant Chords	(33,4)
7	E-maj Scale Strum	Resonant Chords	(33,5)
8	F-maj Scale Strum	Resonant Chords	(33,6)
9	F#-maj Scale Strum	Resonant Chords	(33,7)
10	G-maj Scale Strum	Resonant Chords	(33,8)
11	G#-maj Scale Strum	Resonant Chords	(33,9)
12	A-maj Scale Strum	Resonant Chords	(33,10)
13	A#-maj Scale Strum	Resonant Chords	(33,11)
14	B-maj Scale Strum	Resonant Chords	(33,12)
15	C-min Scale Strum	Resonant Chords	(33,13)
16	C#-min Scale Strum	Resonant Chords	(33,14)
17	D-min Scale Strum	Resonant Chords	(33,15)
18	D#-min Scale Strum	Resonant Chords	(33,16)
19	E-min Scale Strum	Resonant Chords	(33,17)
20	F-min Scale Strum	Resonant Chords	(33,18)
21	F#-min Scale Strum	Resonant Chords	(33,19)
22	G-min Scale Strum	Resonant Chords	(33,20)
23	G#-min Scale Strum	Resonant Chords	(33,21)
24	A-min Scale Strum	Resonant Chords	(33,22)
25	A#-min Scale Strum	Resonant Chords	(33,23)
26	B-min Scale Strum	Resonant Chords	(33,24)
27	C Quartal	Resonant Chords	(33,37)
28	C# Quartal	Resonant Chords	(33,38)
29	D Quartal	Resonant Chords	(33,39)
30	D# Quartal	Resonant Chords	(33,40)
31	E Quartal	Resonant Chords	(33,41)
32	F Quartal	Resonant Chords	(33,42)
33	F# Quartal	Resonant Chords	(33,43)
34	G Quartal	Resonant Chords	(33,44)
35	G# Quartal	Resonant Chords	(33,45)
36	A Quartal	Resonant Chords	(33,46)
37	A# Quartal	Resonant Chords	(33,47)
38	B Quartal	Resonant Chords	(33,48)
39	Chromatic Resonator 1	Resonant Chords	(33,27)
40	Chromatic Resonator 2	Resonant Chords	(33,28)
41	Chromatic 1 o f2	Resonant Chords	(33,50)
42	Chromatic 2 of 2	Resonant Chords	(33,51)
43	Chromatic Resonator 3	Resonant Chords	(33,29)
44	Beam Me Up	Resonant Chords	(33,30)
45	Beam Yourself Up	Resonant Chords	(33,31)
46	Beam SOMEbody Up	Resonant Chords	(33,32)

# Standalone Stereo Presets

Effects Reverse			
Preset Number	Program Name	Algorithm	MIDI (Bank,Program)
0	Reverse 1	Room	(29,41)
1	Thin Reverse 1	Room	(29,42)
2	Dull Reverse 1	Room	(29,43)
3	Reverse 2	Room	(29,44)
4	Thin Reverse 2	Room	(29,45)
5	Dull Reverse 2	Room	(29,46)
6	Reverse 3	Room	(29,47)
7	Thin Reverse 3	Room	(29,48)
8	Dull Reverse 3	Room	(29,49)
9	Reverse 4	Room	(29,50)
10	Thin Reverse 4	Room	(29,51)
11	Dull Reverse 4	Room	(29,52)
12	Reverse 5	Room	(29,55)
13	Thin Reverse 5	Room	(29,56)
14	Dull Reverse 5	Room	(29,57)
15	Forward & Reverse	Room	(29,53)
16	Plastic Reverse	Room	(29,54)
17	Reverse & Tail 1	Room	(29,58)
18	Reverse & Tail 2	Room	(29,60)
19	Reverse & Wall 1	Room	(29,59)
20	Reverse & Wall 2	Room	(29,61)

Pitch Shift			
Preset Number	Program Name	Algorithm	MIDI (Bank,Program)
0	Shift Up 4%	VSO Shift	(36,0)
1	Shift Down 4%	VSO Shift	(36,1)
2	Up a Semitone	VSO Shift	(36,64)
3	Down a Semitone	VSO Shift	(36,65)
4	Dual Mono Up 4%	Multi Mono Shift	(37,0)
5	Dual Mono Down 4%	Multi Mono Shift	(37,1)
6	Dual Mono Up a Semitone	Multi Mono Shift	(37,64)
7	Dual Mono Dn a Semitone	Multi Mono Shift	(37,65)

## Standalone Stereo Presets

<b>Pitch Effects</b>			
Preset Number	Program Name	Algorithm	MIDI (Bank,Program)
0	Staircase Up 1	Multi Voice Shift	(38,2)
1	Staircase Up 2	Multi Voice Shift	(38,5)
2	Staircase Up 3	Multi Voice Shift	(38,8)
3	Staircase Down 1	Multi Voice Shift	(38,0)
4	Staircase Down 2	Multi Voice Shift	(38,3)
5	Staircase Down 3	Multi Voice Shift	(38,6)
6	Staircase Up & Down 1	Multi Voice Shift	(38,1)
7	Staircase Up & Down 2	Multi Voice Shift	(38,4)
8	Staircase Up & Down 3	Multi Voice Shift	(38,7)
9	Wedge	Multi Voice Shift	(38,9)
10	Major Triad 1	Multi Voice Shift	(38,10)
11	Major Triad 2	Multi Voice Shift	(38,14)
12	Minor Triad 1	Multi Voice Shift	(38,11)
13	Minor Triad 2	Multi Voice Shift	(38,15)
14	Diminished Triad 1	Multi Voice Shift	(38,12)
15	Diminished Triad 2	Multi Voice Shift	(38,16)
16	Augmented Triad 1	Multi Voice Shift	(38,13)
17	Augmented Triad 2	Multi Voice Shift	(38,17)
18	Cool 1	Multi Voice Shift	(38,18)
19	Cool 2	Multi Voice Shift	(38,19)
20	Thin Fattener	Multi Voice Shift	(38,20)
21	Medium Fattener	Multi Voice Shift	(38,21)
22	Fat Fattener	Multi Voice Shift	(38,22)
23	Pitched Echo 1	Multi Voice Shift	(38,23)
24	Pitched Echo 2	Multi Voice Shift	(38,24)

<b>Tools</b>			
Preset Number	Program Name	Algorithm	MIDI (Bank,Program)
0	Audio Pass-Thru	Thru	(35,0)
1	Audio Mute	Thru	(35,6)
2	Decorrelated Pink Noise	Signal Generator	(35,1)
3	Correlated Pink Noise	Signal Generator	(35,2)
4	Sine @ -6dB	Signal Generator	(35,3)
5	Sweep @ -6dB	Signal Generator	(35,4)
6	Pink Click	Signal Generator	(35,5)

# Standalone Surround Presets

Halls Small									
Preset Number	Preset Name	Algorithm	MIDI (Bank,Program)						
			Original	Dark	Light	Band	Notch	Front	Rear
0-6	Sml Impact Hall	Hall	(80,40)	(80,41)	(80,42)	(80,43)	(80,44)	(80,5)	(80,8)
7-13	Sml Perc Hall	Hall	(80,45)	(80,46)	(80,47)	(80,48)	(80,49)	(80,20)	(80,21)
14-20	Sml Clear Hall	Hall	(80,10)	(80,9)	(80,11)	(80,55)	(80,109)	(80,18)	(80,19)
21-27	Sml Vocal Hall 1	Hall	(80,12)	(80,56)	(80,57)	(80,58)	(80,110)	(80,23)	(80,24)
28-34	Sml Vocal Hall 2	Hall	(80,13)	(80,59)	(80,60)	(80,61)	(80,111)	(80,25)	(80,26)
35-41	Sml Vocal Hall 3	Hall	(80,14)	(80,62)	(80,63)	(80,64)	(80,112)	(80,27)	(80,28)
42-48	Sml Abrupt Hall	Hall	(80,6)	(80,65)	(80,66)	(80,67)	(80,113)	(80,29)	(80,31)
49-55	Small RHall 1	Random Hall	(81,3)	(81,14)	(81,18)	(81,42)	(81,66)	(81,76)	(81,77)
56-62	Small RHall 2	Random Hall	(81,11)	(81,15)	(81,19)	(81,43)	(81,67)	(81,78)	(81,79)
63-69	Small RHall 3	Random Hall	(81,12)	(81,16)	(81,20)	(81,44)	(81,68)	(81,80)	(81,81)
70-76	Small RHall 4	Random Hall	(81,13)	(81,17)	(81,21)	(81,45)	(81,69)	(81,82)	(81,83)
77-79	Small Vocal Concert 1	Concert Hall	(82,7)	-	-	-	-	(82,21)	(82,22)
80-82	Small Vocal Concert 2	Concert Hall	(82,8)	-	-	-	-	(82,23)	(82,24)
83-85	Small Perc Concert	Concert Hall	(82,14)	-	-	-	-	(82,25)	(82,26)

Halls Medium									
Preset Number	Preset Name	Algorithm	MIDI (Bank,Program)						
			Original	Dark	Light	Band	Notch	Front	Rear
0-6	Med Hall	Hall	(80,7)	(80,77)	(80,78)	(80,79)	(80,87)	(80,32)	(80,33)
7-13	Med Deep Hall	Hall	(80,91)	(80,92)	(80,93)	(80,94)	(80,22)	(80,34)	(80,35)
14-20	Med Vocal Hall 1	Hall	(80,15)	(80,68)	(80,69)	(80,70)	(80,88)	(80,36)	(80,37)
21-27	Med Vocal Hall 2	Hall	(80,16)	(80,71)	(80,72)	(80,73)	(80,89)	(80,38)	(80,39)
28-34	Med Vocal Hall 3	Hall	(80,17)	(80,74)	(80,75)	(80,76)	(80,90)	(80,50)	(80,51)
35-37	Gold Hall	Hall	(85,62)	-	-	-	-	(85,111)	(85,112)
38-44	Medium RHall 1	Random Hall	(81,0)	(81,8)	(81,23)	(81,46)	(81,70)	(81,84)	(81,85)
45-51	Medium RHall 2	Random Hall	(81,5)	(81,9)	(81,24)	(81,47)	(81,71)	(81,86)	(81,87)
52-58	Medium RHall 3	Random Hall	(81,6)	(81,10)	(81,25)	(81,48)	(81,72)	(81,88)	(81,89)
59-65	Medium RHall 4	Random Hall	(81,7)	(81,22)	(81,26)	(81,49)	(81,73)	(81,90)	(81,91)
66-68	Medium Vocal Concert 1	Concert Hall	(82,9)	-	-	-	-	(82,27)	(82,28)
69-71	Medium Vocal Concert 2	Concert Hall	(82,10)	-	-	-	-	(82,29)	(82,30)
72-74	Medium Vocal Concert 3	Concert Hall	(82,11)	-	-	-	-	(82,31)	(82,32)
75-77	Medium Perc Concert	Concert Hall	(82,15)	-	-	-	-	(82,33)	(82,34)

Halls Large									
Preset Number	Preset Name	Algorithm	MIDI (Bank,Program)						
			Original	Dark	Light	Band	Notch	Front	Rear
0-6	Large Hall	Hall	(80,0)	(80,1)	(80,2)	(80,3)	(80,4)	(80,52)	(80,53)
7-13	Large Early Hall	Hall	(96,56)	(96,57)	(96,58)	(96,59)	(96,60)	(80,80)	(80,81)
14-20	Large Deep Hall	Hall	(96,51)	(96,52)	(96,53)	(96,54)	(96,55)	(80,82)	(80,83)
21-27	Lge Vocal Hall 1	Hall	(96,46)	(96,47)	(96,48)	(96,49)	(96,50)	(80,84)	(80,85)
28-34	Lge Vocal Hall 2	Hall	(96,41)	(96,42)	(96,43)	(96,44)	(96,45)	(80,54)	(80,86)
35-41	Lge Vocal Hall 3	Hall	(96,36)	(96,37)	(96,38)	(96,39)	(96,40)	(96,70)	(96,71)
42-48	Lge Vocal Hall 4	Hall	(96,31)	(96,32)	(96,33)	(96,34)	(96,35)	(96,72)	(96,73)
49-55	Lge Neutral Hall	Hall	(96,26)	(96,27)	(96,28)	(96,29)	(96,30)	(96,74)	(96,75)
56-62	Large Pop Hall	Hall	(96,20)	(96,21)	(96,23)	(96,24)	(96,25)	(96,76)	(96,77)
63-69	Ginormous Hall	Hall	(96,15)	(96,16)	(96,17)	(96,18)	(96,19)	(96,78)	(96,79)
70-76	Cathedral 1	Hall	(96,0)	(96,1)	(96,2)	(96,3)	(96,4)	(96,80)	(96,81)
77-83	Cathedral 2	Hall	(96,5)	(96,6)	(96,7)	(96,8)	(96,9)	(96,82)	(96,83)
84-88	Cathedral 3	Hall	(96,10)	(96,11)	(96,12)	(96,13)	(96,14)	-	-
89	EM7 Large Hall	Hall	(96,100)	-	-	-	-	-	-
90-91	Cathedral 3	Hall	-	-	-	-	-	(96,84)	(96,85)
92-98	Large RHall 1	Random Hall	(81,50)	(81,51)	(81,52)	(81,53)	(81,74)	(81,92)	(81,93)
99-105	Large RHall 2	Random Hall	(81,54)	(81,55)	(81,56)	(81,57)	(81,75)	(81,94)	(81,95)
106-112	Large RHall 3	Random Hall	(81,58)	(81,59)	(81,60)	(81,61)	(81,1)	(81,96)	(81,97)
113-119	Large RHall 4	Random Hall	(81,62)	(81,63)	(81,64)	(81,65)	(81,2)	(81,98)	(81,99)
120-126	Concert Hall	Concert Hall	(82,0)	(82,17)	(82,18)	(82,19)	(82,20)	(82,35)	(82,36)
127-129	Large Vocal Concert	Concert Hall	(82,12)	-	-	-	-	(82,37)	(82,38)
130-132	Large Vocal Concert 2	Concert Hall	(82,13)	-	-	-	-	(82,39)	(82,40)
133-135	Large Perc Concert	Concert Hall	(82,16)	-	-	-	-	(82,41)	(82,42)
136-138	Gen. Concert	Concert Hall	(82,6)	-	-	-	-	(82,43)	(82,44)

## Standalone Surround Presets

Plates Small									
Preset Number	Preset Name	Algorithm	MIDI (Bank,Program)						
			Original	Dark	Light	Band	Notch	Front	Rear
0-6	Small Plate 1	Plate	(84,0)	(84,1)	(84,2)	(84,3)	(84,4)	(84,100)	(84,101)
7-13	Small Plate 2	Plate	(84,5)	(84,6)	(84,7)	(84,8)	(84,9)	(84,102)	(84,103)
14-20	Small Plate 3	Plate	(84,10)	(84,11)	(84,12)	(84,13)	(84,14)	(84,104)	(84,105)
21-27	Small Plate 4	Plate	(84,15)	(84,16)	(84,17)	(84,18)	(84,19)	(84,106)	(84,107)
28-32	Shrt Slap Plate 1	Plate	(84,85)	(84,86)	(84,87)	(84,88)	(84,89)	-	-
33-37	Shrt Slap Plate(T)	Plate	(84,90)	(84,91)	(84,92)	(84,93)	(84,94)	-	-

Plates Medium									
Preset Number	Preset Name	Algorithm	MIDI (Bank,Program)						
			Original	Dark	Light	Band	Notch	Front	Rear
0-6	Medium Plate 1	Plate	(84,20)	(84,21)	(84,22)	(84,23)	(84,24)	(84,108)	(84,109)
7-13	Medium Plate 2	Plate	(84,25)	(84,26)	(84,27)	(84,28)	(84,29)	(84,110)	(84,111)
14-20	Medium Plate 3	Plate	(84,30)	(84,31)	(84,32)	(84,33)	(84,34)	(84,112)	(84,113)
21-27	Medium Plate 4	Plate	(84,35)	(84,36)	(84,37)	(84,38)	(84,39)	(84,114)	(84,115)
28-32	Colored Plate 1	Plate	(84,70)	(84,71)	(84,72)	(84,73)	(84,74)	-	-
33-37	Colored Plate 2	Plate	(84,75)	(84,76)	(84,77)	(84,78)	(84,79)	-	-
38-42	Colored Plate 3	Plate	(84,80)	(84,81)	(84,82)	(84,83)	(84,84)	-	-

Plates Large									
Preset Number	Preset Name	Algorithm	MIDI (Bank,Program)						
			Original	Dark	Light	Band	Notch	Front	Rear
0-6	Large Plate 1	Plate	(84,40)	(84,41)	(84,42)	(84,43)	(84,44)	(84,116)	(84,117)
7-13	Large Plate 2	Plate	(84,45)	(84,46)	(84,47)	(84,48)	(84,49)	(84,118)	(84,119)
14-20	Large Plate 3	Plate	(84,50)	(84,51)	(84,52)	(84,53)	(84,54)	(84,120)	(84,121)
21-27	Large Plate 4	Plate	(84,55)	(84,56)	(84,57)	(84,58)	(84,59)	(84,122)	(84,123)
28-34	Giant Plate	Plate	(84,60)	(84,61)	(84,62)	(84,63)	(84,64)	(84,124)	(84,125)
35-39	Echo Plate (T)	Plate	(84,95)	(84,96)	(84,97)	(84,98)	(84,99)	-	-
40-44	Infinite Plate	Plate	(84,65)	(84,66)	(84,67)	(84,68)	(84,69)	-	-

Chambers Small									
Preset Number	Preset Name	Algorithm	MIDI (Bank,Program)						
			Original	Dark	Light	Band	Notch	Front	Rear
0-6	Small Chamber 1	Chamber	(83,5)	(83,6)	(83,7)	(83,8)	(83,9)	(83,40)	(83,41)
7-13	Small Chamber 2	Chamber	(83,55)	(83,56)	(83,57)	(83,58)	(83,59)	(83,42)	(83,43)
14-20	Small Chamber 3	Chamber	(83,60)	(83,61)	(83,62)	(83,63)	(83,64)	(83,44)	(83,45)

Chambers Medium									
Preset Number	Preset Name	Algorithm	MIDI (Bank,Program)						
			Original	Dark	Light	Band	Notch	Front	Rear
0-6	Med Chamber 1	Chamber	(83,0)	(83,1)	(83,2)	(83,3)	(83,4)	(83,46)	(83,47)
7-13	Med Chamber 2	Chamber	(83,70)	(83,71)	(83,72)	(83,73)	(83,74)	(83,48)	(83,49)
14-20	Med Vocal Chamb	Chamber	(83,65)	(83,66)	(83,67)	(83,68)	(83,69)	(83,76)	(83,77)
21-25	Med Slap Chamber	Chamber	(83,15)	(83,16)	(83,17)	(83,18)	(83,19)	-	-
26-30	Slap Chamb 1 (T)	Chamber	(83,20)	(83,21)	(83,22)	(83,23)	(83,24)	-	-
31-35	Slap Chamb 2 (T)	Chamber	(83,25)	(83,26)	(83,27)	(83,28)	(83,29)	-	-
36	EM7 Medium Chamber	Chamber	(83,75)	-	-	-	-	-	-

Chambers Large									
Preset Number	Preset Name	Algorithm	MIDI (Bank,Program)						
			Original	Dark	Light	Band	Notch	Front	Rear
0-6	Large Chamber 1	Chamber	(83,10)	(83,11)	(83,12)	(83,13)	(83,14)	(83,78)	(83,79)
7-13	Deep Chamber 1	Chamber	(83,30)	(83,31)	(83,32)	(83,33)	(83,34)	(83,80)	(83,81)
14-20	Deep Chamber 2	Chamber	(83,35)	(83,36)	(83,37)	(83,38)	(83,39)	(83,82)	(83,83)
21-25	Infinite Chamber	Chamber	(83,50)	(83,51)	(83,52)	(83,53)	(83,54)	-	-

# Standalone Surround Presets

Rooms Small								
Preset Number	Preset Name	Algorithm	MIDI (Bank,Program)					
			Original	Dark	Light	Band	Front	Rear
0	Small Playroom	Room	(85,0)	-	-	-	-	-
1	Clothes Closet 1	Room	(85,96)	-	-	-	-	-
2	Clothes Closet 2	Room	(85,97)	-	-	-	-	-
3	Auto Interior 1	Room	(85,98)	-	-	-	-	-
4	Auto Interior 1 Front	Room	(85,113)	-	-	-	-	-
5	Auto Interior 1 Rear	Room	(85,114)	-	-	-	-	-
6	Auto Interior 2	Room	(85,99)	-	-	-	-	-
7	Auto Interior 2 Front	Room	(85,115)	-	-	-	-	-
8	Auto Interior 2 Rear	Room	(85,116)	-	-	-	-	-
9	Coffin	Room	(85,100)	-	-	-	-	-
10	Small Tight Room 1	Room	(85,6)	-	-	-	-	-
11	Small Tight Room 2	Room	(85,7)	-	-	-	-	-
12	Small Tight Room 3	Room	(85,8)	-	-	-	-	-
13	Small Tight Room 4	Room	(85,9)	-	-	-	-	-
14	Small Tight Room 5	Room	(85,10)	-	-	-	-	-
15	Small Tight Room 6	Room	(85,11)	-	-	-	-	-
16	Small Tight Room 7	Room	(85,12)	-	-	-	-	-
17-19	Small Live Room 1	Room	(85,13)	-	-	-	(85,117)	(85,118)
20-22	Small Live Room 2	Room	(85,14)	-	-	-	(85,119)	(85,120)
23-25	Small Live Room 3	Room	(85,15)	-	-	-	(85,121)	(85,122)
26-28	Small Live Room 4	Room	(85,16)	-	-	-	(85,123)	(85,124)
29-31	Small Live Room 5	Room	(85,17)	-	-	-	(85,125)	(85,126)
32-34	Small Live Room 6	Room	(85,18)	-	-	-	(98,0)	(98,1)
35-37	Small Live Room 7	Room	(85,19)	-	-	-	(98,2)	(98,3)
38-40	Small Live Room 8	Room	(85,20)	-	-	-	(98,4)	(98,5)
41-44	Studio A	Random Hall	(81,4)	(81,30)	(81,34)	(81,38)	-	-
45-48	Studio B	Random Hall	(81,27)	(81,31)	(81,35)	(81,39)	-	-
49-52	Studio C	Random Hall	(81,28)	(81,32)	(81,36)	(81,40)	-	-
53-56	Studio D	Random Hall	(81,29)	(81,33)	(81,37)	(81,41)	-	-
57-60	Studio E	Hall	(96,101)	(96,102)	(96,103)	(96,104)	-	-
61-64	Studio F	Hall	(96,105)	(96,106)	(96,107)	(96,108)	-	-
65-68	Studio G	Hall	(96,109)	(96,110)	(96,111)	(96,112)	-	-
69-72	Studio H	Hall	(96,113)	(96,114)	(96,115)	(96,116)	-	-
73	Air Pressure	Concert Hall	(82,1)	-	-	-	-	-
74	Bedroom	Concert Hall	(82,2)	-	-	-	-	-
75	Cabin Fever	Concert Hall	(82,5)	-	-	-	-	-

# Standalone Surround Presets

Rooms Medium					
Preset Number	Preset Name	Algorithm	MIDI (Bank,Program)		
			Original	Front	Rear
0	Medium Playroom	Room	(85,1)	-	-
1	Mausoleum	Room	(85,101)	-	-
2	Mausoleum Front	Room	(98,6)	-	-
3	Mausoleum Rear	Room	(98,7)	-	-
4	Medium Tight Room 1	Room	(85,21)	-	-
5	Medium Tight Room 2	Room	(85,22)	-	-
6	Medium Tight Room 3	Room	(85,23)	-	-
7	Medium Tight Room 4	Room	(85,24)	-	-
8	Medium Tight Room 5	Room	(85,25)	-	-
9	Medium Tight Room 6	Room	(85,26)	-	-
10	Medium Tight Room 7	Room	(85,27)	-	-
11	Medium Tight Room 8	Room	(85,28)	-	-
12-14	Medium Live Room 1	Room	(85,64)	(98,8)	(98,9)
15-17	Medium Live Room 2	Room	(85,65)	(98,10)	(98,11)
18-20	Medium Live Room 3	Room	(85,66)	(98,12)	(98,13)
21-23	Medium Live Room 4	Room	(85,67)	(98,14)	(98,15)
24-26	Medium Live Room 5	Room	(85,68)	(98,16)	(98,17)
27-29	Medium Live Room 6	Room	(85,69)	(98,18)	(98,19)
30-32	Medium Live Room 7	Room	(85,70)	(98,20)	(98,21)
33-35	Medium Live Room 8	Room	(85,71)	(98,22)	(98,23)
36-38	Medium Live Room 9	Room	(85,72)	(98,24)	(98,25)
39-41	Medium Live Room 10	Room	(85,73)	(98,26)	(98,27)
42-44	Medium Hallway 1	Room	(85,74)	(98,28)	(98,29)
45-47	Medium Hallway 2	Room	(85,75)	(98,30)	(98,31)
48-50	Medium Hallway 3	Room	(85,76)	(98,32)	(98,33)
51	Restroom 1	Room	(85,87)	-	-
52	Restroom 2	Room	(85,88)	-	-
53	Restroom 3	Room	(85,89)	-	-
54	Locker Room 1	Room	(85,90)	-	-
55	Locker Room 2	Room	(85,91)	-	-
56	Locker Room 3	Room	(85,92)	-	-
57	Ambience	Room	(85,5)	-	-
58	Cinema Room	Room	(85,63)	-	-

Rooms Large					
Preset Number	Preset Name	Algorithm	MIDI (Bank,Program)		
			Original	Front	Rear
0	Large Playroom	Room	(85,2)	-	-
1	Large Stairwell 1	Room	(85,93)	-	-
2	Large Stairwell 2	Room	(85,94)	-	-
3	Large Stairwell 3	Room	(85,95)	-	-
4	Large Tight Room 1	Room	(85,77)	-	-
5	Large Tight Room 2	Room	(85,78)	-	-
6	Large Tight Room 3	Room	(85,79)	-	-
7	Large Tight Room 4	Room	(85,80)	-	-
8	Large Tight Room 5	Room	(85,81)	-	-
9	Large Tight Room 6	Room	(85,82)	-	-
10	Large Tight Room 7	Room	(85,83)	-	-
11	Large Tight Room 8	Room	(85,84)	-	-
12	Large Tight Room 9	Room	(85,85)	-	-
13	Large Tight Room 10	Room	(85,86)	-	-
14-16	Large Live Room 1	Room	(85,29)	(98,34)	(98,35)
17-19	Large Live Room 2	Room	(85,30)	(98,36)	(98,37)
20-22	Large Live Room 3	Room	(85,31)	(98,38)	(98,39)
23-25	Large Live Room 4	Room	(85,32)	(98,40)	(98,41)
26-28	Large Live Room 5	Room	(85,33)	(98,42)	(98,43)

# Standalone Surround Presets

Rooms Environments			
Preset Number	Program Name	Algorithm	MIDI (Bank,Program)
0	Exterior Playroom	Room	(85,3)
1	Odd Playroom	Room	(85,4)
2	City Street	Room	(85,34)
3	City Sidewalk	Room	(85,35)
4	In a Cavern	Room	(85,36)
5	At the Forum	Room	(85,37)
6	Michael's Backyard	Room	(85,38)
7	Sideyard	Room	(85,39)
8	Driveway Slap	Room	(85,40)
9	Block Party	Concert Hall	(82,4)
10	Kettle Room 1	Resonant Chords	(89,25)
11	Kettle Room 2	Resonant Chords	(89,26)
12	Kettle Room 3	Resonant Chords	(89,33)
13	Kettle Room 4	Resonant Chords	(89,34)
14	Kettle Room 5	Resonant Chords	(89,35)
15	Kettle Room 6	Resonant Chords	(89,36)
16	Awful Delay Room 1	Dual Delay	(86,8)
17	Awful Delay Room 2	Dual Delay	(86,9)
18	Awful Delay Room 3	Dual Delay	(86,10)
19	Seasick Room 1	Chorus	(88,23)
20	Seasick Room 2	Chorus	(88,24)
21	Seasick Room 3	Chorus	(88,25)
22	Bubble Room	Chorus	(88,26)
23	Dracula's Tomb	Room	(85,102)
24	Dracula's Summer Tomb	Room	(85,103)
25	Ltl Cottonwood Canyon	Room	(85,107)
26	Big Cottonwood Canyon	Room	(85,108)
27	Bryce Canyon	Room	(85,109)
28	Grand Canyon	Room	(85,110)
29	High Canyon	Room	(85,104)
30	Slot Canyon	Room	(85,105)
31	Box Canyon	Room	(85,106)
32	Echo Canyon 1	Dual Delay	(86,13)
33	Echo Canyon 2	Dual Delay	(86,14)
34	Echo Canyon 3	Resonant Chords	(89,49)



## Standalone Surround Presets

Effects Chorus/Flange			
Preset Number	Program Name	Algorithm	MIDI (Bank,Program)
0	Flanger 1	Chorus	(88,0)
1	Flanger 2	Chorus	(88,18)
2	Flanger 3	Chorus	(88,19)
3	Flanger 4	Chorus	(88,20)
4	Flanger 5	Chorus	(88,21)
5	Flanger 6	Chorus	(88,22)
6	Random Flanger	Chorus	(88,37)
7	Rolling Flange	Chorus	(88,17)
8	Flanger Falling	Chorus	(88,27)
9	Flanger Falling Up	Chorus	(88,28)
10	Flanger Freakin Out	Chorus	(88,29)
11	Wide Barely Chorus	Chorus	(88,4)
12	Wide Medium Chorus	Chorus	(88,5)
13	Wide Churn Chorus	Chorus	(88,6)
14	Smearred Chorus	Chorus	(88,7)
15	Midrange Chorus 1	Chorus	(88,8)
16	Midrange Chorus 2	Chorus	(88,9)
17	Highpass Chorus 1	Chorus	(88,10)
18	Highpass Chorus 2	Chorus	(88,11)
19	Bandpass Chorus 1	Chorus	(88,12)
20	Bandpass Chorus 2	Chorus	(88,13)
21	Delay Chorus 1	Chorus	(88,14)
22	Delay Chorus 2	Chorus	(88,15)
23	Delay Chorus 3	Chorus	(88,16)
24	Dynamic Chorus 1	Chorus	(88,38)
25	Dynamic Chorus 2	Chorus	(88,39)
26	Dynamic Chorus 3	Chorus	(88,40)
27	Vibrato	Chorus	(88,30)
28	Squirrely Pitch	Chorus	(88,31)
29	Squirrely Pitch 2	Chorus	(88,32)
30	VibraToad	Chorus	(88,33)
31	VibraToad 2	Chorus	(88,34)
32	VibraToad 3	Chorus	(88,35)
33	Nasty VibraToad	Chorus	(88,36)

## Standalone Surround Presets

Effects Delay			
Preset Number	Program Name	Algorithm	MIDI (Bank,Program)
0	Simple Surrnd Delay	Dual Delay	(86,15)
1	Simple Surrnd Delay (T)	Dual Delay	(86,16)
2	DualDelay	Dual Delay	(86,0)
3	Tempo Shuffle	Dual Delay	(86,1)
4	Tempo Shuffle 2	Dual Delay	(86,2)
5	Machine Gun L/R	Dual Delay	(86,3)
6	Machine Gun R/L	Dual Delay	(86,4)
7	Bouncing Ball 1	Dual Delay	(86,5)
8	Bouncing Ball 2	Dual Delay	(86,6)
9	Bouncing Ball 3	Dual Delay	(86,7)
10	Round n Round	Dual Delay	(86,17)
11	Short Delay-O-Plex	Dual Delay	(86,11)
12	Asymmetric Delay-O-Plex	Dual Delay	(86,12)
13	RandomDelay	Random Delay	(87,0)
14	RandomDelay 2	Random Delay	(87,7)
15	Dynamic Random Delay 1	Random Delay	(87,11)
16	Dynamic Random Delay 2	Random Delay	(87,12)
17	Moving Delay 1	Random Delay	(87,13)
18	Moving Delay 2	Random Delay	(87,14)
19	Moving Delay 3	Random Delay	(87,15)
20	Short Delay-O-Plex 2	Random Delay	(87,1)
21	Wacky-Plex 1	Random Delay	(87,2)
22	Wacky-Plex 2	Random Delay	(87,3)
23	Wacky-Plex 3	Random Delay	(87,4)
24	Wacky-Plex 4	Random Delay	(87,5)
25	Wacky-Plex 5	Random Delay	(87,6)
26	BeeBee Slapz	Concert Hall	(82,3)

## Standalone Surround Presets

Effects Resonance			
Preset Number	Program Name	Algorithm	MIDI (Bank,Program)
0	Jimi Strum	Resonant Chords	(89,0)
1	Whole Tone Strum	Resonant Chords	(89,52)
2	Something 2 Strum	Resonant Chords	(89,53)
3	C-maj Scale Strum	Resonant Chords	(89,1)
4	C#-maj Scale Strum	Resonant Chords	(89,2)
5	D-maj Scale Strum	Resonant Chords	(89,3)
6	D#-maj Scale Strum	Resonant Chords	(89,4)
7	E-maj Scale Strum	Resonant Chords	(89,5)
8	F-maj Scale Strum	Resonant Chords	(89,6)
9	F#-maj Scale Strum	Resonant Chords	(89,7)
10	G-maj Scale Strum	Resonant Chords	(89,8)
11	G#-maj Scale Strum	Resonant Chords	(89,9)
12	A-maj Scale Strum	Resonant Chords	(89,10)
13	A#-maj Scale Strum	Resonant Chords	(89,11)
14	B-maj Scale Strum	Resonant Chords	(89,12)
15	C-min Scale Strum	Resonant Chords	(89,13)
16	C#-min Scale Strum	Resonant Chords	(89,14)
17	D-min Scale Strum	Resonant Chords	(89,15)
18	D#-min Scale Strum	Resonant Chords	(89,16)
19	E-min Scale Strum	Resonant Chords	(89,17)
20	F-min Scale Strum	Resonant Chords	(89,18)
21	F#-min Scale Strum	Resonant Chords	(89,19)
22	G-min Scale Strum	Resonant Chords	(89,20)
23	G#-min Scale Strum	Resonant Chords	(89,21)
24	A-min Scale Strum	Resonant Chords	(89,22)
25	A#-min Scale Strum	Resonant Chords	(89,23)
26	B-min Scale Strum	Resonant Chords	(89,24)
27	C Quartal	Resonant Chords	(89,37)
28	C# Quartal	Resonant Chords	(89,38)
29	D Quartal	Resonant Chords	(89,39)
30	D# Quartal	Resonant Chords	(89,40)
31	E Quartal	Resonant Chords	(89,41)
32	F Quartal	Resonant Chords	(89,42)
33	F# Quartal	Resonant Chords	(89,43)
34	G Quartal	Resonant Chords	(89,44)
35	G# Quartal	Resonant Chords	(89,45)
36	A Quartal	Resonant Chords	(89,46)
37	A# Quartal	Resonant Chords	(89,47)
38	B Quartal	Resonant Chords	(89,48)
39	Chromatic Resonator 1	Resonant Chords	(89,27)
40	Chromatic Resonator 2	Resonant Chords	(89,28)
41	Chromatic 1 of 2	Resonant Chords	(89,50)
42	Chromatic 2 of 2	Resonant Chords	(89,51)
43	Chromatic Resonator 3	Resonant Chords	(89,29)
44	Beam Me Up	Resonant Chords	(89,30)
45	Beam Yourself Up	Resonant Chords	(89,31)
46	Beam SOMEbody Up	Resonant Chords	(89,32)

## Standalone Surround Presets

Effects Reverse			
Preset Number	Program Name	Algorithm	MIDI (Bank,Program)
0	Reverse 1	Room	(85,41)
1	Thin Reverse 1	Room	(85,42)
2	Dull Reverse 1	Room	(85,43)
3	Reverse 2	Room	(85,44)
4	Thin Reverse 2	Room	(85,45)
5	Dull Reverse 2	Room	(85,46)
6	Reverse 3	Room	(85,47)
7	Thin Reverse 3	Room	(85,48)
8	Dull Reverse 3	Room	(85,49)
9	Reverse 4	Room	(85,50)
10	Thin Reverse 4	Room	(85,51)
11	Dull Reverse 4	Room	(85,52)
12	Reverse 5	Room	(85,55)
13	Thin Reverse 5	Room	(85,56)
14	Dull Reverse 5	Room	(85,57)
15	Forward & Reverse	Room	(85,53)
16	Plastic Reverse	Room	(85,54)
17	Reverse & Tail 1	Room	(85,58)
18	Reverse & Tail 2	Room	(85,60)
19	Reverse & Wall 1	Room	(85,59)
20	Reverse & Wall 2	Room	(85,61)

Pitch Shift			
Preset Number	Program Name	Algorithm	MIDI (Bank,Program)
0	Shift Up 4%	VSO Shift	(92,0)
1	Shift Down 4%	VSO Shift	(92,1)
2	Up a Semitone	VSO Shift	(92,64)
3	Down a Semitone	VSO Shift	(92,65)
4	Multi Mono Up 4%	Multi Mono Shift	(92,2)
5	Multi Mono Down 4%	Multi Mono Shift	(92,3)
6	Multi Mono Up a Semitone	Multi Mono Shift	(92,66)
7	Multi Mono Dn a Semitone	Multi Mono Shift	(92,67)
8	Post Shift Up 4%	Post VSO Shift	(92,4)
9	Post Shift Down 4%	Post VSO Shift	(92,5)
10	Post Shift Up a Semitone	Post VSO Shift	(92,68)
11	Post Shift Dn a Semitone	Post VSO Shift	(92,69)

## Standalone Surround Presets

Pitch Effects			
Preset Number	Program Name	Algorithm	MIDI (Bank,Program)
0	Staircase Up 1	Multi Voice Shift	(95,0)
1	Staircase Up 2	Multi Voice Shift	(95,1)
2	Staircase Up 3	Multi Voice Shift	(95,2)
3	Staircase Down 1	Multi Voice Shift	(95,3)
4	Staircase Down 2	Multi Voice Shift	(95,4)
5	Staircase Down 3	Multi Voice Shift	(95,5)
6	Staircase Up Down 1	Multi Voice Shift	(95,6)
7	Staircase Up Down 2	Multi Voice Shift	(95,7)
8	Staircase Up Down 3	Multi Voice Shift	(95,8)
9	Wedge	Multi Voice Shift	(95,9)
10	Major Triad 1	Multi Voice Shift	(95,10)
11	Major Triad 2	Multi Voice Shift	(95,11)
12	Minor Triad 1	Multi Voice Shift	(95,12)
13	Minor Triad 2	Multi Voice Shift	(95,13)
14	Diminished Triad 1	Multi Voice Shift	(95,14)
15	Diminished Triad 2	Multi Voice Shift	(95,15)
16	Augmented Triad 1	Multi Voice Shift	(95,16)
17	Augmented Triad 2	Multi Voice Shift	(95,17)
18	Cool 1	Multi Voice Shift	(95,18)
19	Cool 2	Multi Voice Shift	(95,19)
20	Ted in a Dress	Multi Voice Shift	(95,20)
21	Thin Fattener	Multi Voice Shift	(95,21)
22	Medium Fattener	Multi Voice Shift	(95,22)
23	Fat Fattener	Multi Voice Shift	(95,23)
24	Pitched Echo 1	Multi Voice Shift	(95,24)
25	Pitched Echo 2	Multi Voice Shift	(95,25)
26	Clockwise Up 4chan	Multi Voice Shift	(95,34)
27	Clockwise Up 5chan	Multi Voice Shift	(95,26)
28	Clockwise Down 4Chan	Multi Voice Shift	(95,35)
29	Clockwise Down 5Chan	Multi Voice Shift	(95,27)
30	Carousel 1 4chan	Multi Voice Shift	(95,36)
31	Carousel 1 5chan	Multi Voice Shift	(95,28)
32	Carousel 2 4Chan	Multi Voice Shift	(95,37)
33	Carousel 2 5Chan	Multi Voice Shift	(95,29)
34	Round Fatty 4Chan	Multi Voice Shift	(95,38)
35	Round Fatty 5Chan	Multi Voice Shift	(95,30)
36	Round Cool 1 4chan	Multi Voice Shift	(95,39)
37	Round Cool 1 5chan	Multi Voice Shift	(95,31)
38	Round Cool 2 4chan	Multi Voice Shift	(95,40)
39	Round Cool 2 5chan	Multi Voice Shift	(95,32)
40	Round Cool 3 4chan	Multi Voice Shift	(95,41)
41	Round Cool 3 5chan	Multi Voice Shift	(95,33)

Tools			
Preset Number	Program Name	Algorithm	MIDI (Bank,Program)
0	Audio Pass-Thru	Thru	(91,1)
1	Audio Mute	Thru	(91,2)
2	Decorrelated Pink Noise	Signal Generator	(91,0)
3	Correlated Pink Noise	Signal Generator	(91,3)
4	Sine @ -6dB	Signal Generator	(91,4)
5	Sweep @ -6dB	Signal Generator	(91,5)
6	Pink Click	Signal Generator	(91,6)

## Standalone Combined Presets

Combined Mono Reverbs			
Preset Number	Preset Name	Configuration	MIDI (Bank,Program)
0	Dual Combo Plates	Cascade Mono	(51,4)
1	Small&Large Plates	Dual Mono	(49,1)
2	Small&Large Halls	Dual Mono	(49,2)
3	Two Studios	Dual Mono	(49,3)
4	Larry's Closets	Dual Mono	(49,5)
5	Small&Large Chambers	Dual Mono	(49,4)
6	Dual Combo Chambers	Cascade Mono	(51,5)
7	Dual Combo Chambers 2	Cascade Mono	(51,6)
8	Dual Combo Churches	Cascade Mono	(51,7)
9	Two Shifted Rooms	Cascade Mono	(51,12)

Combined Mono Effects			
Preset Number	Preset Name	Configuration	MIDI (Bank,Program)
0	Dual Reverse -> Flange	Cascade Mono	(51,3)
1	Dual Flangers	Dual Mono	(49,6)
2	Dual Hall -> Flange	Cascade Mono	(51,1)
3	Dual Hall -> Flange 2	Cascade Mono	(51,2)
4	Dual Room -> Flange	Cascade Mono	(51,8)
5	Dual Delay -> Flange	Cascade Mono	(51,9)
6	Dual Res -> Flange	Cascade Mono	(51,10)
7	Dual Tomb -> Chorus	Cascade Mono	(51,11)
8	Dual Phone Futz	Dual Mono	(49,7)
9	Cross-Shifted Chambers	Cascade Mono	(51,13)
10	Dual Aluminum	Cascade Mono	(51,14)

Combined Stereo Reverbs			
Preset Number	Preset Name	Configuration	MIDI (Bank,Program)
0	Wide Stance	Combined Stereo (Monoln)	(53,1)
1	Split Dialog 1	Combined Stereo (Monoln)	(53,2)
2	Split Dialog 2	Combined Stereo (Monoln)	(53,3)
3	Split Dialog 3	Combined Stereo (Monoln)	(53,4)
4	Split Dialog 4	Combined Stereo (Monoln)	(53,5)
5	Split Dialog 5	Combined Stereo (Monoln)	(53,6)
6	Split Chamber 1	Cascade Mono To Stereo	(52,1)
7	Split Chamber 2	Cascade Mono To Stereo	(52,2)
8	Combo Chamber 4	Cascade Stereo	(50,6)
9	Combo Chamber 8	Cascade Stereo	(50,7)
10	Asymmetric Chambers	Combined Stereo (Monoln)	(53,12)
11	Combo Cavern	Cascade Stereo	(50,8)
12	Combo Echo Canyon	Cascade Stereo	(50,9)
13	Split Slot Canyon	Cascade Mono To Stereo	(52,3)
14	Split Box Canyon	Cascade Mono To Stereo	(52,4)
15	Split Phone -> Room 1	Cascade Mono To Stereo	(52,8)
16	Split Phone -> Room 2	Cascade Mono To Stereo	(52,9)
17	Split Phone -> Room 3	Cascade Mono To Stereo	(52,10)
18	Split Phone -> Room 4	Cascade Mono To Stereo	(52,11)
19	Split Phone -> Room 5	Cascade Mono To Stereo	(52,12)
20	Split Phone -> Room 6	Cascade Mono To Stereo	(52,13)
21	Split Phone -> Room 7	Cascade Mono To Stereo	(52,14)
22	Hall Down a Semitone	Cascade Stereo	(50,11)
23	Hall Up an Octave	Cascade Stereo	(50,12)
24	Hall Down a Fourth	Cascade Stereo	(50,13)
25	Sharp Chamber	Cascade Stereo	(50,18)
26	Shifted Tomb	Cascade Stereo	(50,14)
27	Sharp Chamber	Cascade Stereo	(50,18)
28	Extra Fat Plate	Cascade Stereo	(50,15)
29	Extra Fat Plate 2	Cascade Stereo	(50,16)

## Standalone Combined Presets

Combined Stereo Effects			
Preset Number	Preset Name	Configuration	MIDI (Bank,Program)
0	Buttars Brain	Cascade Stereo	(50,10)
1	ConcertHall->Flange	Cascade Stereo	(50,1)
2	RandomHall->Flange	Cascade Stereo	(50,2)
3	Hall->Chorus	Cascade Stereo	(50,3)
4	Plate->Flange	Cascade Stereo	(50,4)
5	Ghostly Voice Trails	Cascade Stereo	(50,5)
6	Split Churn-a-verb 1	Cascade Mono To Stereo	(52,5)
7	Split Churn-a-verb 2	Cascade Mono To Stereo	(52,6)
8	Split Churn-a-res	Cascade Mono To Stereo	(52,7)
9	Split Resonant Flange	Cascade Mono To Stereo	(52,15)
10	Forward <--> Reverse	Combined Stereo (MonoIn)	(53,7)
11	Dual Machine Guns	Combined Stereo (MonoIn)	(53,10)
12	Dual Bouncing Balls	Combined Stereo (MonoIn)	(53,11)
13	House of Horror 1	Combined Stereo (MonoIn)	(53,8)
14	House of Horror 2	Combined Stereo (MonoIn)	(53,9)
15	Kazow!	Cascade Stereo	(50,17)
16	Left Up Right Dn Hall	Cascade Mono To Stereo	(52,16)
17	Left Up Right Dn Wedge	Cascade Mono To Stereo	(52,17)
18	Ghostly Strums	Cascade Mono To Stereo	(52,18)
19	I'll have the gnocchi	Cascade Mono To Stereo	(52,19)

# Plug-in Mono Presets

Chamber (mono)					
0-4*	Small Chamber 1	25-29*	Med Vocal Chamb	46-50*	Large Chamber 1
5-9*	Small Chamber 2	30-34*	Med Slap Chamber	51-55*	Deep Chamber 1
10-14*	Small Chamber 3	35-39*	Slap Chamb 1 (T)	56-60*	Deep Chamber 2
15-19*	Medium Chamber 1	40-44*	Slap Chamb 2 (T)	61-65*	Infinite Chamber
20-24*	Medium Chamber 2	45	EM7 Medium Chamber		

Chorus (mono)					
0	Flanger 1	6	Rolling Flange	12	Bandpass Chorus 1
1	Flanger 2	7	Smeared Chorus	13	Bandpass Chorus 2
2	Flanger 3	8	Midrange Chorus 1	14	Delay Chorus 1
3	Flanger 4	9	Midrange Chorus 2	15	Delay Chorus 2
4	Flanger 5	10	Highpass Chorus 1	16	Delay Chorus 3
5	Flanger 6	11	Highpass Chorus 2		

Concert Hall (mono)					
0	Small Vocal Concert 1	6	Medium Perc Concert	16	Bedroom
1	Small Vocal Concert 2	7-11*	Gen. Concert	17	Cabin Fever
2	Small Perc Concert	12	Large Vocal Concert	18	Block Party
3	Medium Vocal Concert 1	13	Large Vocal Concert 2	19	BeeBee Slapz
4	Medium Vocal Concert 2	14	Large Perc Concert		
5	Medium Vocal Concert 3	15	Air Pressure		

Dual Delay (mono)					
0	Simple Mono Delay	3	Tempo Shuffle	6	Short Delay-O-Plex
1	Simple Mono Delay (T)	4	Tempo Shuffle 2	7	Phone Futz
2	DualDelay	5	Bouncing Ball		

Hall (mono)					
0-3**	Sml Clear Hall	43-47*	Med Vocal Hall 2	93-97*	Lge Neutral Hall
4-7**	Sml Vocal Hall 1	48-52*	Med Vocal Hall 3	98-102*	Cathedral 1
8-11**	Sml Vocal Hall 2	53-57*	Lge Vocal Hall 1	103-107*	Cathedral 2
12-15**	Sml Vocal Hall 3	58-62*	Large Pop Hall	108-112*	Cathedral 3
16-19**	Sml Abrupt Hall	63-67*	Lge Vocal Hall 2	113-117*	Ginormous Hall
20-23**	Sml Impact Hall	68-72*	Lge Vocal Hall 3	118-121**	Studio E
24-27**	Sml Perc Hall	73-77*	Lge Vocal Hall 4	122-125**	Studio F
28-32*	Med Hall	78-82*	Large Early Hall	126-129**	Studio G
33-37*	Med Deep Hall	83-87*	Large Deep Hall	130-133**	Studio H
38-42*	Med Vocal Hall 1	88-92*	Large Hall		

Pitch 3-Voice (mono)					
0	Staircase Up	3	Thin Fattener	6	Pitched Echo 1
1	Staircase Down	4	Medium Fattener	7	Pitched Echo 2
2	Wedge	5	Fat Fattener		

Pitch VSO (mono)	
0	Shift Up a Semitone
1	Shift Dn a Semitone

Pitch VSO% (mono)	
0	Shift Up 4%
1	Shift Down 4%

Plate (mono)					
0-4*	Small Plate 1	35-39*	Medium Plate 2	70-74*	Large Plate 2
5-9*	Small Plate 2	40-44*	Medium Plate 3	75-79*	Large Plate 3
10-14*	Small Plate 3	45-49*	Medium Plate 4	80-84*	Large Plate 4
15-19*	Small Plate 4	50-54*	Colored Plate 1	85-89*	Giant Plate
20-24*	Shrt Slap Plate 1	55-59*	Colored Plate 2	90-94*	Echo Plate (T)
25-29*	Shr Slap Plate(T)	60-64*	Colored Plate 3	95-99*	Infinite Plate
30-34*	Medium Plate 1	65-69*	Large Plate 1		

\*Variations include Dark, Light, Band, and Notch.

\*\*Variations include Dark, Light, and Band.



## Plug-in Mono Presets

Random Delay (mono)					
0	RandomDelay	3	Wacky-Plex 2	6	Wacky-Plex 5
1	Short Delay-O-Plex 2	4	Wacky-Plex 3		
2	Wacky-Plex 1	5	Wacky-Plex 4		

Random Hall (mono)					
0-4*	Small Rhall 1	30-34*	Medium RHall 3	59-62**	Studio A
5-9*	Small Rhall 2	35-39*	Medium RHall 4	63-66**	Studio B
10-14*	Small Rhall 3	40-44*	Large RHall 1	67-70**	Studio C
15-19*	Small Rhall 4	45-48***	Large RHall 2	71-74**	Studio D
20-24*	Medium RHall 1	49-53*	Large RHall 3		
25-29*	Medium RHall 2	54-58*	Large RHall 4		

Resonant Chords (mono)					
0	C Quartal	5	F Quartal	10	A# Quartal
1	C# Quartal	6	F# Quartal	11	B Quartal
2	D Quartal	7	G Quartal	12	Jimi Strum
3	D# Quartal	8	G# Quartal		
4	E Quartal	9	A Quartal		

Room (mono)					
0	Small Playroom	35	Medium Live Room 2	70	Large Live Room 5
1	Clothes Closet 1	36	Medium Live Room 3	71	Gold Hall
2	Clothes Closet 2	37	Medium Live Room 4	72	Exterior Playroom
3	Auto Interior 1	38	Medium Live Room 5	73	Odd Playroom
4	Auto Interior 2	39	Medium Live Room 6	74	City Street
5	Coffin	40	Medium Live Room 7	75	City Sidewalk
6	Small Tight Room 1	41	Medium Live Room 8	76	In a Cavern
7	Small Tight Room 2	42	Medium Live Room 9	77	At the Forum
8	Small Tight Room 3	43	Medium Live Room 10	78	Michael's Backyard
9	Small Tight Room 4	44	Medium Hallway 1	79	Sidyard
10	Small Tight Room 5	45	Medium Hallway 2	80	Driveway Slap
11	Small Tight Room 6	46	Medium Hallway 3	81	Dracula's Tomb
12	Small Tight Room 7	47	Restroom 1	82	Dracula's Summer Tomb
13	Small Live Room 1	48	Restroom 2	83	Reverse 1
14	Small Live Room 2	49	Restroom 3	84	Thin Reverse 1
15	Small Live Room 3	50	Locker Room 1	85	Dull Reverse 1
16	Small Live Room 4	51	Locker Room 2	86	Reverse 2
17	Small Live Room 5	52	Locker Room 3	87	Thin Reverse 2
18	Small Live Room 6	53	Cinema Room	88	Dull Reverse 2
19	Small Live Room 7	54	Large Playroom	89	Reverse 3
20	Small Live Room 8	55	Large Stairwell 1	90	Thin Reverse 3
21	Medium Playroom	56	Large Stairwell 2	91	Dull Reverse 3
22	Ambience	57	Large Stairwell 3	92	Reverse 4
23	Mausoleum	58	Large Tight Room 1	93	Thin Reverse 4
24	Meduim Dead Room 1	59	Large Tight Room 2	94	Dull Reverse 4
25	Meduim Dead Room 2	60	Large Tight Room 3	95	Reverse 5
26	Meduim Dead Room 3	61	Large Tight Room 4	96	Thin Reverse 5
27	Meduim Dead Room 4	62	Large Tight Room 5	97	Dull Reverse 5
28	Meduim Dead Room 5	63	Large Tight Room 6	98	Forward & Reverse
29	Meduim Dead Room 6	64	Large Tight Room 7	99	Plastic Reverse
30	Meduim Dead Room 7	65	Large Tight Room 8	100	Reverse & Tail 1
31	Meduim Dead Room 8	66	Large Live Room 1	101	Reverse & Tail 2
32	Meduim Dead Room 9	67	Large Live Room 2	102	Reverse & Wall 1
33	Meduim Dead Room 10	68	Large Live Room 3	103	Reverse & Wall 2
34	Medium Live Room 1	69	Large Live Room 4		

\*Variations include Dark, Light, Band, and Notch.

\*\*Variations include Dark, Light, and Band.

\*\*\*Variations include Dark, Band, and Notch.

## Plug-in Stereo Presets

Chamber (stereo)					
0-4*	Small Chamber 1	30-34*	Med Slap Chamber	56-60*	Lge Narrow Chamber
5-9*	Small Chamber 2	35-39*	Slap Chamb 1 (T)	61-65*	Deep Chamber 1
10-14*	Small Chamber 3	40-44*	Slap Chamb 2 (T)	66-70*	Deep Chamber 2
15-19*	Medium Chamber 1	45	EM7 Medium Chamber	71-75*	Infinite Chamber
20-24*	Medium Chamber 2	46-50*	Large Chamber 1		
25-29*	Med Vocal Chamb	51-55*	Lge Wide Chamber		

Chorus (stereo)					
0	Flanger 1	14	Wide Barely Chorus	28	Dynamic Chorus 2
1	Flanger 2	15	Wide Medium Chorus	29	Dynamic Chorus 3
2	Flanger 3	16	Wide Churn Chorus	30	Vibrato
3	Flanger 4	17	Smeared Chorus	31	Squirrely Pitch
4	Flanger 5	18	Midrange Chorus 1	32	Squirrely Pitch 2
5	Flanger 6	19	Midrange Chorus 2	33	VibraToad
6	Random Flanger	20	Highpass Chorus 1	34	VibraToad 2
7	Rolling Flange	21	Highpass Chorus 2	35	VibraToad 3
8	Flanger Falling	22	Bandpass Chorus 1	36	Nasty VibraToad
9	Flanger Falling Up	23	Bandpass Chorus 2	37	Seasick Room 1
10	Flanger Freaking Out	24	Delay Chorus 1	38	Seasick Room 2
11	Narrow Barely Chorus	25	Delay Chorus 2	39	Seasick Room 3
12	Narrow Medium Chorus	26	Delay Chorus 3	40	Bubble Room
13	Narrow Churn Chorus	27	Dynamic Chorus 1		

Concert Hall (stereo)					
0	Small Vocal Concert 1	6	Medium Perc Concert	16	Air Pressure
1	Small Vocal Concert 2	7*	Concert Hall	17	Bedroom
2	Small Perc Concert	12	Large Vocal Concert	18	Cabin Fever
3	Medium Vocal Concert 1	13	Large Vocal Concert 2	19	Block Party
4	Medium Vocal Concert 2	14	Large Perc Concert	20	BeeBee Slapz
5	Medium Vocal Concert 3	15	Gen. Concert		

Dual Delay (stereo)					
0	Simple Stereo Delay	6	Machine Gun R/L	12	Awful Delay Room 1
1	Simple Stereo Delay (T)	7	Bouncing Ball L/R	13	Awful Delay Room 2
2	DualDelay	8	Bouncing Ball R/L	14	Awful Delay Room 3
3	Tempo Shuffle	9	Bouncing Ball Ctr	15	Echo Canyon 1
4	Tempo Shuffle 2	10	Short Delay-O-Plex	16	Echo Canyon 2
5	Machine Gun L/R	11	Asymmetric Delay-O-Plex		

Hall (stereo)					
0-4*	Sml Narrow Hall	60-64*	Med Vocal Hall 2	120-124*	Lge Vocal Hall 4
5-9*	Sml Wide Hall	65-69*	Med Vocal Hall 3	125-129*	Lge Neutral Hall
10-14*	Sml Impact Hall	70-74*	Med Narrow Hall	130-134*	Large Pop Hall
15-19*	Sml Perc Hall	75-79*	Med Wide Hall	135-139*	Ginormous Hall
20-24*	Sml Clear Hall	80-84*	Large Hall	140-144*	Cathedral 1
25-29*	Sml Vocal Hall 1	85-89*	Large Early Hall	145-149*	Cathedral 2
30-34*	Sml Vocal Hall 2	90-94*	Large Deep Hall	150-154*	Cathedral 3
35-39*	Sml Vocal Hall 3	95-99*	Large Wide Hall	155	EM7 Large Hall
40-44*	Sml Abrupt Hall	100-104*	Lge Narrow Hall	156-159**	Studio E
45-49*	Med Hall	105-109*	Lge Vocal Hall 1	160-163**	Studio F
50*54*	Med Deep Hall	110-114*	Lge Vocal Hall 2	164-167**	Studio G
55-59*	Med Vocal Hall 1	115-119*	Lge Vocal Hall 3	168-171**	Studio H

\*Variations include Dark, Light, Band, and Notch.

\*\*Variations include Dark, Light, and Band.

## Plug-in Stereo Presets

Pitch 6-Voice (stereo)					
0	Staircase Up 1	9	Wedge	18	Cool 1
1	Staircase Up 2	10	Major Triad 1	19	Cool 2
2	Staircase Up 3	11	Major Triad 2	20	Thin Fattener
3	Staircase Down 1	12	Minor Triad 1	21	Medium Fattener
4	Staircase Down 2	13	Minor Triad 2	22	Fat Fattener
5	Staircase Down 3	14	Diminished Triad 1	23	Pitched Echo 1
6	Staircase Up & Down 1	15	Diminished Triad 2	24	Pitched Echo 2
7	Staircase Up & Down 2	16	Augmented Triad 1		
8	Staircase Up & Down 3	17	Augmented Triad 2		

Pitch Dual Mono (stereo)	
0	Dual Mono Up a Semitone
1	Dual Mono Down a Semitone

Pitch Dual Mono % (stereo)	
0	Dual Mono Up 4%
1	Dual Mono Down 4%

Pitch VSO (stereo)	
0	Up a Semitone
1	Down a Semitone

Pitch VSO% (stereo)	
0	Shift Up 4%
1	Shift Down 4%

Plate (stereo)					
0-4*	Small Plate 1	35-39*	Medium Plate 2	70-74*	Large Plate 2
5-9*	Small Plate 2	40-44*	Medium Plate 3	75-79*	Large Plate 3
10-14*	Small Plate 3	45-49*	Medium Plate 4	80-84*	Large Plate 4
15-19*	Small Plate 4	50-54*	Colored Plate 1	85-89*	Giant Plate
20-24*	Shrt Slap Plate 1	55-59*	Colored Plate 2	90-94*	Echo Plate (T)
25-29*	Shr Slap Plate(T)	60-64*	Colored Plate 3	95-99*	Infinite Plate
30-34*	Medium Plate 1	65-69*	Large Plate 1		

Random Delay (stereo)					
0	RandomDelay	6	Moving Delay 3	12	Wacky-Plex 5
1	RandomDelay 2	7	Short Delay-O-Plex 2	13	Rezzo Delay
2	Dynamic Random Delay 1	8	Wacky-Plex 1	14	Rezzo Delay 2
3	Dynamic Random Delay 2	9	Wacky-Plex 2	15	Rezzo Delay 3
4	Moving Delay 1	10	Wacky-Plex 3		
5	Moving Delay 2	11	Wacky-Plex 4		

Random Hall (stereo)					
0-4*	Small Rhall 1	30-34*	Medium RHall 3	60-63**	Studio A
5-9*	Small Rhall 2	35-39*	Medium RHall 4	64-67**	Studio B
10-14*	Small Rhall 3	40-44*	Large RHall 1	68-71**	Studio C
15-19*	Small Rhall 4	45-49*	Large RHall 2	72-75**	Studio D
20-24*	Medium RHall 1	50-54*	Large RHall 3		
25-29*	Medium RHall 2	55-59*	Large RHall 4		

\*Variations include Dark, Light, Band, and Notch.

\*\*Variations include Dark, Light, and Band.

# Plug-in Stereo Presets

Resonant Chords (stereo)					
0	C-maj Scale Strum	18	F#-min Scale Strum	36	A Quartal
1	C#-maj Scale Strum	19	G-min Scale Strum	37	A# Quartal
2	D-maj Scale Strum	20	G#-min Scale Strum	38	B Quartal
3	D#-maj Scale Strum	21	A-min Scale Strum	39	Chromatic Resonator 1
4	E-maj Scale Strum	22	A#-min Scale Strum	40	Chromatic Resonator 2
5	F-maj Scale Strum	23	B-min Scale Strum	41	Chromatic 1 o f2
6	F#-maj Scale Strum	24	Jimi Strum	42	Chromatic 2 of 2
7	G-maj Scale Strum	25	Diatonic Strum	43	Chromatic Resonator 3
8	G#-maj Scale Strum	26	Something 2 Strum	44	Beam Me Up
9	A-maj Scale Strum	27	C Quartal	45	Beam Yourself Up
10	A#-maj Scale Strum	28	C# Quartal	46	Beam SOMEbody Up
11	B-maj Scale Strum	29	D Quartal	47	Kettle Room 1
12	C-min Scale Strum	30	D# Quartal	48	Kettle Room 2
13	C#-min Scale Strum	31	E Quartal	49	Kettle Room 3
14	D-min Scale Strum	32	F Quartal	50	Kettle Room 4
15	D#-min Scale Strum	33	F# Quartal	51	Kettle Room 5
16	E-min Scale Strum	34	G Quartal	52	Kettle Room 6
17	F-min Scale Strum	35	G# Quartal	53	Echo Canyon 3

Room (stereo)					
0	Small Playroom	37	Medium Live Room 6	74	City Street
1	Clothes Closet 1	38	Medium Live Room 7	75	City Sidewalk
2	Clothes Closet 2	39	Medium Live Room 8	76	In a Cavern
3	Auto Interior 1	40	Medium Live Room 9	77	At the Forum
4	Auto Interior 2	41	Medium Live Room 10	78	Michael's Backyard
5	Coffin	42	Medium Hallway 1	79	Sideyard
6	Small Tight Room 1	43	Medium Hallway 2	80	Driveway Slap
7	Small Tight Room 2	44	Medium Hallway 3	81	Dracula's Tomb
8	Small Tight Room 3	45	Restroom 1	82	Dracula's Summer Tomb
9	Small Tight Room 4	46	Restroom 2	83	Ltl Cottonwood Canyon
10	Small Tight Room 5	47	Restroom 3	84	Big Cottonwood Canyon
11	Small Tight Room 6	48	Locker Room 1	85	Bryce Canyon
12	Small Tight Room 7	49	Locker Room 2	86	Grand Canyon
13	Small Live Room 1	50	Locker Room 3	87	High Canyon
14	Small Live Room 2	51	Cinema Room	88	Slot Canyon
15	Small Live Room 3	52	Large Playroom	89	Box Canyon
16	Small Live Room 4	53	Large Stairwell 1	90	Reverse 1
17	Small Live Room 5	54	Large Stairwell 2	91	Thin Reverse 1
18	Small Live Room 6	55	Large Stairwell 3	92	Dull Reverse 1
19	Small Live Room 7	56	Large Tight Room 1	93	Reverse 2
20	Small Live Room 8	57	Large Tight Room 2	94	Thin Reverse 2
21	Medium Playroom	58	Large Tight Room 3	95	Dull Reverse 2
22	Ambience	59	Large Tight Room 4	96	Reverse 3
23	Mausoleum	60	Large Tight Room 5	97	Thin Reverse 3
24	Meduim Tight Room 1	61	Large Tight Room 6	98	Dull Reverse 3
25	Meduim Tight Room 2	62	Large Tight Room 7	99	Reverse 4
26	Meduim Tight Room 3	63	Large Tight Room 8	100	Thin Reverse 4
27	Meduim Tight Room 4	64	Large Tight Room 9	101	Dull Reverse 4
28	Meduim Tight Room 5	65	Large Tight Room 10	102	Reverse 5
29	Meduim Tight Room 6	66	Large Live Room 1	103	Thin Reverse 5
30	Meduim Tight Room 7	67	Large Live Room 2	104	Dull Reverse 5
31	Meduim Tight Room 8	68	Large Live Room 3	105	Forward & Reverse
32	Medium Live Room 1	69	Large Live Room 4	106	Plastic Reverse
33	Medium Live Room 2	70	Large Live Room 5	107	Reverse & Tail 1
34	Medium Live Room 3	71	Gold Hall	108	Reverse & Tail 2
35	Medium Live Room 4	72	Exterior Playroom	109	Reverse & Wall 1
36	Medium Live Room 5	73	Odd Playroom	110	Reverse & Wall 2

## Plug-in Surround Presets

Chamber (surround)					
0-6*	Small Chamber 1	35-41*	Med Vocal Chamb	58-64*	Large Chamber 1
7-13*	Small Chamber 2	42-46**	Med Slap Chamber	65-71*	Deep Chamber 1
14-20*	Small Chamber 3	47-51**	Slap Chamb 1 (T)	72-78*	Deep Chamber 2
21-27*	Medium Chamber 1	52-56**	Slap Chamb 2 (T)	79-83**	Infinite Chamber
28-34*	Medium Chamber 2	57	EM7 Medium Chamber		

Chorus (surround)					
0	Flanger 1	13	Wide Churn Chorus	26	Dynamic Chorus 3
1	Flanger 2	14	Smearred Chorus	27	Vibrato
2	Flanger 3	15	Midrange Chorus 1	28	Squirrely Pitch
3	Flanger 4	16	Midrange Chorus 2	29	Squirrely Pitch 2
4	Flanger 5	17	Highpass Chorus 1	30	VibraToad
5	Flanger 6	18	Highpass Chorus 2	31	VibraToad 2
6	Random Flanger	19	Bandpass Chorus 1	32	VibraToad 3
7	Rolling Flange	20	Bandpass Chorus 2	33	Nasty VibraToad
8	Flanger Falling	21	Delay Chorus 1	34	Seasick Room 1
9	Flanger Falling Up	22	Delay Chorus 2	35	Seasick Room 2
10	Flanger Freaking Out	23	Delay Chorus 3	36	Seasick Room 3
11	Wide Barely Chorus	24	Dynamic Chorus 1	37	Bubble Room
12	Wide Medium Chorus	25	Dynamic Chorus 2		

Concert Hall (surround)					
0-2***	Small Vocal Concert 1	18-20***	Medium Perc Concert	40	Air Pressure
3-5***	Small Vocal Concert 2	21-27*	Concert Hall	41	Bedroom
6-8***	Small Perc Concert	28-30***	Large Vocal Concert	42	Cabin Fever
9-11***	Medium Vocal Concert 1	31-33***	Large Vocal Concert 2	43	Block Party
12-14***	Medium Vocal Concert 2	34-36***	Large Perc Concert	44	BeeBee Slapz
15-17***	Medium Vocal Concert 3	37-39***	Gen. Concert		

Dual Delay (surround)					
0	Simple Stereo Delay	6	Machine Gun R/L	12	Asymmetric Delay-O-Plex
1	Simple Surrnd Delay (T)	7	Bouncing Ball 1	13	Echo Canyon 1
2	DualDelay	8	Bouncing Ball 2	14	Echo Canyon 2
3	Tempo Shuffle	9	Bouncing Ball 3	15	Awful Delay Room 1
4	Tempo Shuffle 2	10	Round n Round	16	Awful Delay Room 2
5	Machine Gun L/R	11	Short Delay-O-Plex	17	Awful Delay Room 3

Hall (surround)					
0-6*	Sml Impact Hall	77-83*	Med Vocal Hall 3	154-160*	Cathedral 1
7-13*	Sml Perc Hall	84-90*	Large Hall	161-167*	Cathedral 2
14-20*	Sml Clear Hall	91-97*	Large Early Hall	168-172**	Cathedral 3
21-27*	Sml Vocal Hall 1	98-104*	Large Deep Hall	173	EM7 Large Hall
28-34*	Sml Vocal Hall 2	105-111*	Lge Vocal Hall 1	174-175	Cathedral 3
35-41*	Sml Vocal Hall 3	112-118*	Lge Vocal Hall 2	176-179****	Studio E
42-48*	Sml Abrupt Hall	119-125*	Lge Vocal Hall 3	180-183****	Studio F
49-55*	Med Hall	126-132*	Lge Vocal Hall 4	184-187***	Studio G
56-62*	Med Deep Hall	133-139*	Lge Neutral Hall	188-191****	Studio H
63-69*	Med Vocal Hall 1	140-146*	Large Pop Hall		
70-76*	Med Vocal Hall 2	147-153*	Ginormous Hall		

\*Variations include Dark, Light, Band, Notch, Front and Rear.

\*\*Variations include Dark, Light, Band and Notch.

\*\*\*Variations include Front and Rear.

\*\*\*\*Variations include Dark, Light and Bandpass.

# Plug-in Surround Presets

Pitch Multi Voice (surround)					
0	Staircase Up 1	14	Diminished Triad 1	28	Clockwise Down 4Chan
1	Staircase Up 2	15	Diminished Triad 2	29	Clockwise Down 5Chan
2	Staircase Up 3	16	Augmented Triad 1	30	Carousel 1 4chan
3	Staircase Down 1	17	Augmented Triad 2	31	Carousel 1 5chan
4	Staircase Down 2	18	Cool 1	32	Carousel 2 4Chan
5	Staircase Down 3	19	Cool 2	33	Carousel 2 5Chan
6	Staircase Up Down 1	20	Ted in a Dress	34	Round Fatty 4Chan
7	Staircase Up Down 2	21	Thin Fattener	35	Round Fatty 5Chan
8	Staircase Up Down 3	22	Medium Fattener	36	Round Cool 1 4chan
9	Wedge	23	Fat Fattener	37	Round Cool 1 5chan
10	Major Triad 1	24	Pitched Echo 1	38	Round Cool 2 4chan
11	Major Triad 2	25	Pitched Echo 2	39	Round Cool 2 5chan
12	Minor Triad 1	26	Clockwise Up 4chan	40	Round Cool 3 4chan
13	Minor Triad 2	27	Clockwise Up 5chan	41	Round Cool 3 5chan

Pitch Multi Mono (surround)	
0	Multi Mono Up a Semitone
1	Multi Mono Down a Semitone

Pitch Multi Mono % (surround)	
0	Multi Mono Up 4%
1	Multi Mono Down 4%

Pitch Post VSO (surround)	
0	Post Shift Up a Semitone
1	Post Shift Dn a Semitone

Pitch Post VSO% (surround)	
0	Post Shift Up 4%
1	Post Shift Down 4%

Plate (surround)					
0-6*	Small Plate 1	45-51*	Medium Plate 2	88-94*	Large Plate 2
7-13*	Small Plate 2	52-58*	Medium Plate 3	95-101*	Large Plate 3
14-20*	Small Plate 3	59-65*	Medium Plate 4	102-108*	Large Plate 4
21-27*	Small Plate 4	66-70**	Colored Plate 1	109-115*	Giant Plate
28-32**	Shrt Slap Plate 1	71-75**	Colored Plate 2	116-120**	Echo Plate (T)
33-37**	Shr Slap Plate(T)	76-80**	Colored Plate 3	121-125**	Infinite Plate
38-44*	Medium Plate 1	81-87*	Large Plate 1		

Random Delay (surround)					
0	RandomDelay	5	Moving Delay 2	10	Wacky-Plex 3
1	RandomDelay 2	6	Moving Delay 3	11	Wacky-Plex 4
2	Dynamic Random Delay 1	7	Short Delay-O-Plex 2	12	Wacky-Plex 5
3	Dynamic Random Delay 2	8	Wacky-Plex 1		
4	Moving Delay 1	9	Wacky-Plex 2		

Random Hall (surround)					
0-6*	Small RHall 1	42-48*	Medium RHall 3	84-87****	Studio A
7-13*	Small RHall 2	49-55*	Medium RHall 4	88-91****	Studio B
14-20*	Small RHall 3	56-62*	Large RHall 1	92-95****	Studio C
21-27*	Small RHall 4	63-69*	Large RHall 2	96-99****	Studio D
28-34*	Medium RHall 1	70-76*	Large RHall 3		
35-41*	Medium RHall 2	77-83*	Large Rhall 4		

\*Variations include Dark, Light, Band, Notch, Front and Rear.

\*\*Variations include Dark, Light, Band and Notch.

\*\*\*\*Variations include Dark, Light and Bandpass.

# Plug-in Surround Presets

Resonant Chords (surround)					
0	Jimi Strum	18	D#-min Scale Strum	36	A Quartal
1	Whole Tone Strum	19	E-min Scale Strum	37	A# Quartal
2	Something 2 Strum	20	F-min Scale Strum	38	B Quartal
3	C-maj Scale Strum	21	F#-min Scale Strum	39	Chromatic Resonator 1
4	C#-maj Scale Strum	22	G-min Scale Strum	40	Chromatic Resonator 2
5	D-maj Scale Strum	23	G#-min Scale Strum	41	Chromatic 1 o f2
6	D#-maj Scale Strum	24	A-min Scale Strum	42	Chromatic 2 of 2
7	E-maj Scale Strum	25	A#-min Scale Strum	43	Chromatic Resonator 3
8	F-maj Scale Strum	26	B-min Scale Strum	44	Beam Me Up
9	F#-maj Scale Strum	27	C Quartal	45	Beam Yourself Up
10	G-maj Scale Strum	28	C# Quartal	46	Beam SOMEbody Up
11	G#-maj Scale Strum	29	D Quartal	47	Kettle Room 1
12	A-maj Scale Strum	30	D# Quartal	48	Kettle Room 2
13	A#-maj Scale Strum	31	E Quartal	49	Kettle Room 3
14	B-maj Scale Strum	32	F Quartal	50	Kettle Room 4
15	C-min Scale Strum	33	F# Quartal	51	Kettle Room 5
16	C#-min Scale Strum	34	G Quartal	52	Kettle Room 6
17	D-min Scale Strum	35	G# Quartal	53	Echo Canyon 3

Room (surround)					
0	Small Playroom	71-73***	Medium Live Room 7	134	City Sidewalk
1	Clothes Closet 1	74-76***	Medium Live Room 8	135	In a Cavern
2	Clothes Closet 2	77-79***	Medium Live Room 9	136	At the Forum
3-5***	Auto Interior 1	80-82***	Medium Live Room 10	137	Michael's Backyard
6-8***	Auto Interior 2	83-85***	Medium Hallway 1	138	Sideyard
9	Coffin	86-88***	Medium Hallway 2	139	Driveway Slap
10	Small Tight Room 1	89-91***	Medium Hallway 3	140	Ltl Cottonwood Canyon
11	Small Tight Room 2	92	Restroom 1	141	Big Cottonwood Canyon
12	Small Tight Room 3	93	Restroom 2	142	Bryce Canyon
13	Small Tight Room 4	94	Restroom 3	143	Grand Canyon
14	Small Tight Room 5	95	Locker Room 1	144	High Canyon
15	Small Tight Room 6	96	Locker Room 2	145	Slot Canyon
16	Small Tight Room 7	97	Locker Room 3	146	Box Canyon
17-19***	Small Live Room 1	98	Ambience	147	Odd Playroom
20-22***	Small Live Room 2	99	Cinema Room	148	Dracula's Tomb
23-25***	Small Live Room 3	100	Large Playroom	149	Dracula's Summer Tomb
26-28***	Small Live Room 4	101	Large Stairwell 1	150	Reverse 1
29-31***	Small Live Room 5	102	Large Stairwell 2	151	Thin Reverse 1
32-34***	Small Live Room 6	103	Large Stairwell 3	152	Dull Reverse 1
35-37***	Small Live Room 7	104	Large Tight Room 1	153	Reverse 2
38-40***	Small Live Room 8	105	Large Tight Room 2	154	Thin Reverse 2
41	Medium Playroom	106	Large Tight Room 3	155	Dull Reverse 2
42-44***	Mausoleum	107	Large Tight Room 4	156	Reverse 3
45	Meduim Tight Room 1	108	Large Tight Room 5	157	Thin Reverse 3
46	Meduim Tight Room 2	109	Large Tight Room 6	158	Dull Reverse 3
47	Meduim Tight Room 3	110	Large Tight Room 7	159	Reverse 4
48	Meduim Tight Room 4	111	Large Tight Room 8	160	Thin Reverse 4
49	Meduim Tight Room 5	112	Large Tight Room 9	161	Dull Reverse 4
50	Meduim Tight Room 6	113	Large Tight Room 10	162	Reverse 5
51	Meduim Tight Room 7	114-116***	Large Live Room 1	163	Thin Reverse 5
52	Meduim Tight Room 8	117-119***	Large Live Room 2	164	Dull Reverse 5
53-55***	Medium Live Room 1	120-122***	Large Live Room 3	165	Forward & Reverse
56-58***	Medium Live Room 2	123-125***	Large Live Room 4	166	Plastic Reverse
59-61***	Medium Live Room 3	126-128***	Large Live Room 5	167	Reverse & Tail 1
62-64***	Medium Live Room 4	129-131***	Gold Hall	168	Reverse & Tail 2
65-67***	Medium Live Room 5	132	Exterior Playroom	169	Reverse & Wall 1
68-70***	Medium Live Room 6	133	City Street	170	Reverse & Wall 2

\*\*\*Variations include Front and Rear.

