

Internal / External Console Wiring Cables

[Print This Page](#)

The copper conductors of all these console cables are made of famous NEGLEX OFC, hence we can recommend any of these with confidence for the highest quality wiring of mixing consoles, rack panels, and studio equipment.

All cables feature XLPE (Cross-Linked Polyethylene) which has excellent electrical characteristics and prevents shrink-back during soldering.

Served (spiral) shield provides easier cable termination and better sound quality than braided shield.

Standard Console Cable
Part No. W2944



- Small size for space saving.
- Very flexible and easy to use.
- Ten colors available for easy identification.
- Same configuration as the core of our standard multi mic. snake cable series (EZID models).
- Additional drain wire makes wiring efficient, as it can be crimped by the same size crimp terminal, as the conductors.

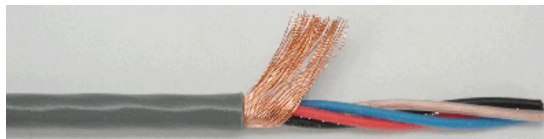
[Back To Top](#)

Large Conductor Size Console Cable
Part No. W2806



- #22AWG conductor version technically similar to #W2549 NEGLEX balanced Mic. Cable except for smaller outer jacket.
- This item is designed for permanent installation and where larger conductor size is required such as long runs.
- Jacket Colour: Only Gray is available.

Mini-Quad Console Cable
Part No. W2799

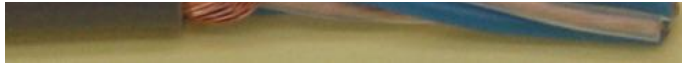


- Quad configuration reduces electromagnetic noise.
- Four different colours of insulation makes it possible to use as a four conductor overall shield cable.
- Conductor size: same as #W2944
- Jacket Colour: Only Gray is available.

[Back To Top](#)

Large Size Quad Cable
Part No. W2820


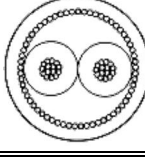





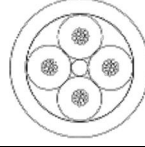
- #24AWG conductor version technically similar to #W2534 NEGLEX quad Mic. Cable except for smaller and slippery outer jacket.
- This item is designed for permanent installation and where larger conductor size is required such as long runs.

[Back To Top](#)

SPECIFICATIONS AND CHARACTERISTICS

Configuration					
Part No.		W2944	W2806	W2799	
No. of Conductor		2	2	4	
Conductor	Details	30/0.08 OFC	30/0.12 OFC	30/0.08 OFC	
	Size(mm ²)	0.15mm ² (#26AWG)	0.34mm ² (#22AWG)	0.15mm ² (#26AWG)	
Insulation	Ov. Dia.(mm)	1.0Ø (0.039")	1.9Ø (0.075")	1.0Ø (0.039")	
	Material	XLPE (Cross-Linked Polyethylene)			
	Core Colors	Red / Clear	Blue / Clear	Black / Red / Blue / Clear	
Drain Wire	Details	7/0.18A	-	-	
	Size	0.18mm ² (#25AWG)	-	-	
Served Shield		Approx. 58/0.10A	Approx. 58/0.10A	Approx. 60/0.12A	
Jacket	Ov. Dia.(mm)	2.5Ø (0.098")	5.2Ø (0.205")	3.2Ø (0.126")	
	Material	PVC			
	Core Colors	Black / Brown / Red / Orange / Yellow / Green / Blue / Purple / Gray / White	Gray	Gray	
Roll Sizes		50m (164 Ft) 100m (328Ft) 200m (656Ft)	200m (656Ft) (standard)	50m (164 Ft) 100m (328Ft) 200m (656Ft)	
Weight per 200m Roll		2.5kg	8kg	3.8kg	
DC Resistance at 20°C	Inner Cond.	0.13Ω/m(0.040Ω/Ft)	0.058Ω/m(0.018Ω/Ft)	0.13Ω/m(0.040Ω/Ft)	
	Shield	0.035Ω/m(0.011Ω/Ft)	0.013Ω/m(0.004Ω/Ft)	0.030Ω/m(0.009Ω/Ft)	
Capacitance at 1kHz, 20°C (Partial C. Value) See below figure*	K ₀	130pF/m(40pF/Ft)	87pF/m(27pF/Ft)	69pF/m(21pF/Ft)	
	K ₁	12pF/m(3.7pF/Ft)	11pF/m(3.4pF/Ft)	15pF/m(4.6pF/Ft)	
	K ₂	-	-	2pF/m(0.6pF/Ft)	
	Quad-Connection		Cond-Cond.		131pF/m(40pF/Ft)
			Cond-Shield		192pF/m(59pF/Ft)
Inductance between conductors at 1kHz, 20°C		0.6μH/m(0.18μH/Ft)	0.8μH/m(0.24μH/Ft)	0.5μH/m(0.15μH/Ft)	
Electrostatic Noise**		20mV Max.	5mV Max.	1.5mV Max.	
Electromagnetic Noise		0.1mV Max.	0.2mV Max.	0.02mV Max.	

[Back To Top](#)

Configuration		
Part No.		W2820
No. of Conductor		4
Conductor	Details	20/0.12 OFC
	Size(mm ²)	0.226mm ² (#24AWG)
Insulation	Ov. Dia.(mm)	1.6Ø (0.063")
	Material	XLPE (Cross-Linked Polyethylene)
	Core Colors	Blue / Clear (Quad)
Drain Wire	Details	-
	Size	-
Served Shield		Approx. 64/0.18A
Jacket	Ov. Dia.(mm)	5.0Ø (0.197")
	Material	PVC
	Core Colors	Gray
Roll Sizes		200m (656Ft) (standard)
Weight per 200m Roll		8kg
DC Resistance at 20°C	Inner Cond.	0.083Ω/m(0.025Ω/Ft)
	Shield	0.012Ω/m(0.0037Ω/Ft)
Capacitance at 1kHz, 20°C	K ₀	65pF/m(20pF/Ft)
	K ₁	13pF/m(4pF/Ft)
	K ₂	4pF/m(1.2pF/Ft)

(Partial C. Value) See below figure*	1"×2	4pF/m(1.2pF/Ft)
	Quad-Connection	97pF/m(29.6pF/Ft)
	Cond-Shield	110pF/m(33.6pF/Ft)
Inductance between conductors at 1kHz, 20°C		0.4μH/m(0.121μH/Ft)
Electrostatic Noise**		50mV Max.
Electromagnetic Noise		0.15mV Max.

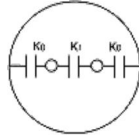
[Back To Top](#)

COMMON SPECS

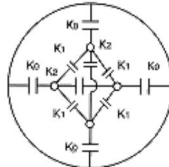
Voltage Breakdown	Must withstand at DC 500V/15sec.
Insulation Resistance	100000 MΩ/ × m Min. at DC 125V, 20°C

Using standard testing methods of Mogami Wire & Cable Corp.

* Partial Capacitance



Part No. W2944 & W2806



Part No. W2799 & W2820

[Back To Top](#)